

# TASMANIAN STATISTICAL INDICATORS

EMBARGO: 11:30AM (CANBERRA TIME) FRI 8 DEC 2000

## CONTENTS

	page
Notes . . . . .	2
Main features . . . . .	3
List of tables. . . . .	8

## SUBJECT AREAS

<b>1</b> Population and demography . . . . .	9
<b>2</b> Labour force . . . . .	10
<b>3</b> Wages and prices . . . . .	18
<b>4</b> Production . . . . .	24
<b>5</b> Primary industry . . . . .	25
<b>6</b> Building . . . . .	29
<b>7</b> Finance . . . . .	30
<b>8</b> Tourism . . . . .	32
<b>9</b> Transport . . . . .	34
<b>10</b> Retail trade. . . . .	35
<b>11</b> Overseas trade . . . . .	36
<b>12</b> Australia and State comparisons. . . . .	38
<b>13</b> Tasmanian Statistical Divisions comparisons. . . . .	40

## ADDITIONAL INFORMATION

Map: Tasmanian Statistical Divisions. . . . .	42
---	----

- For further information about these and related statistics, contact the National Information Service on 1300 135 070 or Jackie Saarinen on Hobart 03 6222 5812.

## NOTES

### FORTHCOMING ISSUES

<i>ISSUE</i>	<i>RELEASE DATE</i>
January 2001	12 January 2001
February 2001	8 February 2001

### INTRODUCTION

1 This publication contains latest figures for a comprehensive range of economic indicators. Statistics shown in this publication are the latest available at the date of preparation and may be subject to revision in subsequent issues. Reference should therefore always be made to the latest issue or to the statistical publication on the specific subject.

### SEASONAL ADJUSTMENT AND TREND ESTIMATION

2 Seasonal adjustment is a means of removing the estimated effects of normal seasonal variation from the series so that the effects of other influences on the series can be more clearly recognised. Seasonal adjustment does not aim to remove the irregular or non-seasonal influences which may be present in any particular month. This means that month-to-month movements of the seasonally adjusted estimates may not be reliable indicators of trend behaviour.

3 The smoothing of seasonally adjusted series reduces the impact of the irregular components of the seasonally adjusted series and creates trend estimates. These trend estimates are derived by applying a 13-term Henderson-weighted moving average to all months except the last six. The last six monthly trend estimates are obtained by applying surrogates of the Henderson average to the seasonally adjusted series.

4 While this smoothing technique enables estimates to be produced for the latest month, it does result in revisions to the most recent months as additional observations become available. Generally, subsequent revisions become smaller and after 3 months have a negligible impact on the series.

5 ABS statistical series are being impacted by varying degrees as a result of The New Tax System (TNTS), introduced in Australia from 1 July 2000. TNTS includes the removal of Wholesale Sales Tax and the introduction of a Goods and Service Tax (GST), and as a result, a number of ABS data series will reflect significant and subsequent impacts. Further information can be found in *ABS Statistics and The New Tax System* (Cat. no. 1358.0).

### SYMBOLS AND OTHER USAGES

n.a.	not available
n.p.	not available for separate publication (but included in totals where applicable)
n.y.a.	not yet available
..	not applicable
—	nil or rounded to zero
p	preliminary—figure or series subject to revision
r	figure or series revised since previous issue

Stevan R. Matheson  
Regional Director, Tasmania

## MAIN FEATURES

### THE LABOUR FORCE

**Trend estimates** There were an estimated 220,500 persons (based on trend estimates) in the labour force in October 2000 and an estimated 371,400 civilian Tasmanians aged 15 years or more, yielding a labour force participation rate of 59.4%. This compares with 58.8% in October 1999. The Australian labour force participation rate for October 2000 was 63.8%. This compares with 63.3% in October 1999 (see table 39 and *Labour Force, Australia, Preliminary* (Cat. no. 6202.0)).

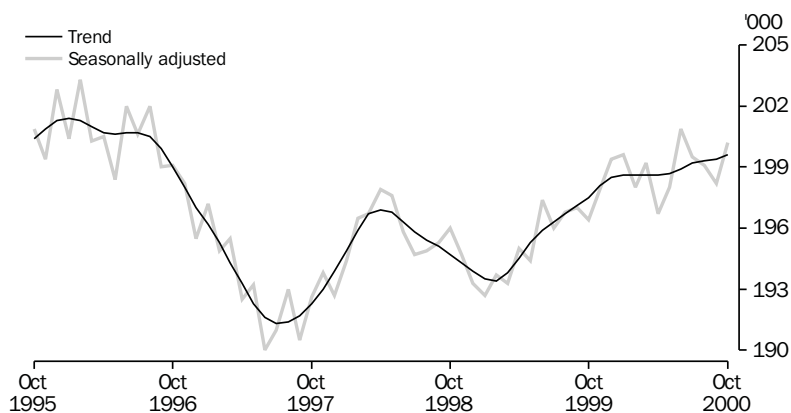
For Tasmanian males, the trend estimate of the participation rate was 68.6%, compared with 68.2% in October 1999. For Tasmanian females, the trend estimate of the participation rate was 50.7%, compared with 50.0% in October 1999 (see table 3).

### EMPLOYMENT

**State comparisons** There was an increase of 1.1% in Tasmania's employment over the 12 months to October 2000. The largest percentage increase in employment was in Victoria (4.0%) and New South Wales (3.4%).

**Trend estimates** The increase in Australia's employment over the same period was 3.1% (see table 39 and *Labour Force, Australia, Preliminary* (Cat. no. 6202.0)).

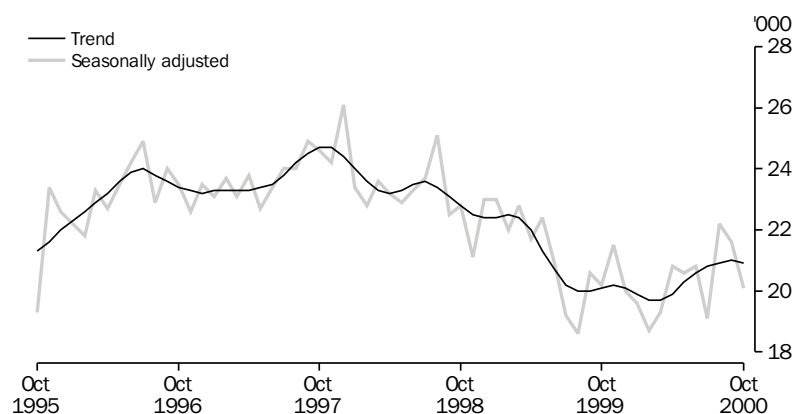
#### EMPLOYMENT



### UNEMPLOYMENT

**Trend estimates** The trend estimate of the number of unemployed persons in Tasmania for October 2000 was 20,900. This compares with 20,100 in October 1999. The trend estimate of the unemployment rate of 9.5% in October 2000 compares with 9.2% in October 1999. The Australian trend estimate of the unemployment rate of 6.3% in October 2000 compares with 7.0% in October 1999 (see table 3 and 39, and *Labour Force, Australia, Preliminary* (Cat. no. 6202.0)).

## UNEMPLOYMENT



## CONSUMER PRICE INDEX

The Consumer Price Index (All groups) for Hobart rose by 3.8% in the September quarter of 2000. For the weighted average of the eight capital cities, the index rose 3.7% for the September quarter.

All capital cities recorded a rise in the index for September quarter 2000. Brisbane recorded the highest, at 3.9% and Darwin recorded the lowest rise at 3.4%.

The introduction of The New Tax System, in particular the goods and service tax, has had a direct impact on many of the price movements observed in the September quarter 2000 CPI (see note 5 on page 2 of this issue for details).

## LIVESTOCK SLAUGHTERING

### Trend estimates

The September trend estimate for Tasmania for the slaughtering of cattle and calves was 3.7% less than the previous month. Over the same period the trend estimate for the number of sheep and lambs slaughtered remained steady while the trend estimate for pigs slaughtered also fell, down by 1.2%.

In September 2000, the trend estimate of the number of cattle and calves slaughtered was 17,900. This was down 25.5% on the number for September 1999, and down 22.7% on the number for September 1998.

The trend estimate for the slaughtering of sheep and lambs was 85,600 in September 2000. This was down by 0.9% on the number for September 1999, but up 21.8% on the number for September 1998.

The trend estimate of 4,850 pigs slaughtered in September 2000 was 21.6% less than for September 1999 and 29.0% less than the trend estimate for September 1998. (See table 21)

## BUILDING APPROVALS

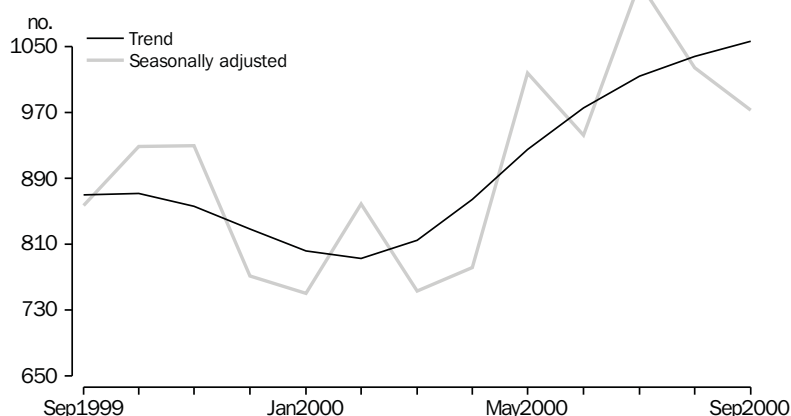
**Original terms** There were 105 dwelling units approved during September 2000, with 86 new houses, and 19 new other residential buildings. The number of dwelling units approved during September compared with 83 for August 2000 and 119 in September 1999.

At current prices, the value of total building was \$36.2 million in September 2000, 52.7% above the August 2000 figure of \$23.7 million and 6.0% below the September 1999 figure of \$38.5 million. Residential building contributed \$13.0 million and non-residential building \$23.2 million in September 2000 (see table 27 and *Building Approvals, Australia* (Cat. no. 8731.0)).

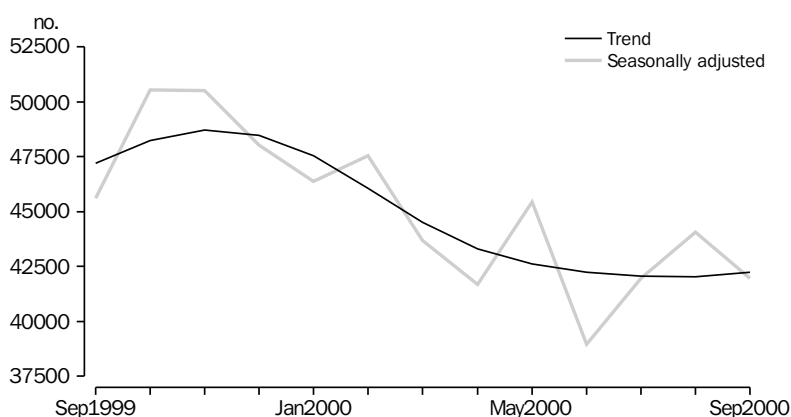
## HOUSING FINANCE

**Trend estimates** Trend figures for the number of Housing Finance Commitments in Tasmania rose from 1,038 in August 2000 to 1,057 in September 2000. Tasmania has recorded a trend increase in the number of housing finance commitments in each month since February 2000. The number of commitments has also risen 21.5% between September 1999 and September 2000. Nationally, September 2000 reported the first upward trend movement since November 1999.

HOUSING FINANCE, TASMANIA, Number of dwellings



HOUSING FINANCE, AUSTRALIA, Number of dwellings



Trend estimates  
*continued*

The total value of commitments for Tasmania in September 2000 was \$76 million. This is same as the trend value recorded in August 2000, but an 11.8% increase over the September 1999 figure. Nationally, the value of commitments has decreased 16.3% between September 1999 and September 2000 (see table 28 and *Housing Finance for Owner Occupation, Australia* (Cat. no. 5609.0)).

#### NEW MOTOR VEHICLE REGISTRATIONS

Original terms

There were 1,545 new motor vehicles (excluding motorcycles) registered in Tasmania during September 2000. This was 5.0% above the 1,472 registered in August 2000 and 6.0% above the September 1999 figure of 1,458. Of the new motor vehicles (excluding motorcycles) registered in September 2000, 454 were vehicles registered by vehicle rental businesses, compared with 209 in August 2000 and 470 in September 1999 (see table 34).

#### RETAIL

Original terms

In original terms, the estimate of retail turnover in Australia for September 2000 was \$12,516.4 million, 4.8% above the figure recorded in September 1999. In original terms, the estimate of retail turnover in Tasmania for September 2000 was \$264.9 million, 0.5% above the figure for September 1999.

Seasonally adjusted terms

In seasonally adjusted terms, the estimate of retail turnover in Australia for September 2000 was \$12,763.0 million, 4.7% above the figure recorded in September 1999. In seasonally adjusted terms, the estimate of retail turnover in Tasmania for September 2000 was \$277.0 million, 1.1% above the figure recorded in September 1999. (see table 35 and *Retail Trade, Australia* (Cat. no. 8501.0)).

#### OVERSEAS TRADE

The value of Tasmania's exports for the month of September 2000 was \$165 million, a decrease of 8% over the month of August. Australia's exports for September totalled \$9,783 million, an increase of 5% over the August figure.

Tasmania's major export destinations for the month of September 2000 were Japan (\$30.3 million), Hong Kong (\$25.5 million) and Taiwan (\$21.4 million). Major commodity groups exported for the month were non-ferrous metals (\$62.0 million), fish, crustaceans and molluscs (\$16.3 million) and metallic ores and metal scrap (\$10.2 million).



## LIST OF TABLES

<b>1</b>	Population	9
<b>2</b>	Births, deaths and marriages	9
<b>3</b>	Labour force status	10
<b>4</b>	Labour force status by region, males	11
<b>5</b>	Labour force status by region, females	12
<b>6</b>	Labour force status by region, persons	13
<b>7</b>	Teenage labour market	14
<b>8</b>	All employed persons by occupation	15
<b>9</b>	Employed wage and salary earners, sector and industry	16
<b>10</b>	Average hours worked	16
<b>11</b>	Job vacancies	17
<b>12</b>	Industrial disputes	17
<b>13</b>	Average weekly earnings of employees	18
<b>14</b>	Indexes of total hourly rates of pay	19
<b>15</b>	Summary of annual movements in wages and prices	20
<b>16</b>	House price index numbers, Hobart	20
<b>17</b>	Consumer price index, Hobart and eight capital cities combined	21
<b>18</b>	Price index of materials used in building other than house building, Hobart	22
<b>19</b>	Production of selected commodities	24
<b>20</b>	Livestock slaughtering: original	25
<b>21</b>	Livestock slaughtering: seasonally adjusted and trend	25
<b>22</b>	Meat production	26
<b>23</b>	Principal mineral concentrates produced	26
<b>24</b>	Sawmills and plywood mills, logs delivered and timber produced	27
<b>25</b>	Chipping and grinding of wood	28
<b>26</b>	Logs delivered for milling or chipping	28
<b>27</b>	Building approvals	29
<b>28</b>	Secured housing commitments	30
<b>29</b>	Private new capital expenditure by type of asset	30
<b>30</b>	Banking statistics	31
<b>31</b>	Accommodation establishments	32
<b>32</b>	National Parks, person entries	33
<b>33</b>	Tracks in National Parks, walker registrations	33
<b>34</b>	Registrations of new motor vehicles	34
<b>35</b>	Turnover of retail establishments at current prices	35
<b>36</b>	Value of overseas trade—Tasmania and Australia	36
<b>37</b>	Merchandise exports by selected countries and country groups	36
<b>38</b>	Merchandise exports by selected commodity groups	37
<b>39</b>	Major Statistical Indicators—Australia and State comparisons	38
<b>40</b>	Major Statistical Indicators—Tasmanian Statistical Divisions	40



# 1

## POPULATION

	<i>Estimated resident population</i>	<i>Natural increase(a)</i>	<i>Net estimated migration gain</i>	<i>Total population growth</i>	<i>Annual growth rate(b)</i>
	'000	'000	'000	'000	%
<b>1996-97</b>	473.5	2.4	-3.4	-1.0	-0.20
<b>1997-98</b>	471.7	2.1	-3.9	-1.8	-0.38
<b>1998-99</b>	470.8	2.7	-3.6	-0.9	-0.19
<b>1998</b>					
March qtr	472.3	0.6	-1.0	-0.3	-0.38
June qtr	471.7	0.5	-1.1	-0.6	-0.38
September qtr	471.6	0.6	-0.7	-0.1	-0.30
December qtr	471.6	0.7	-0.7	-0.1	-0.23
<b>1999</b>					
March qtr	471.1	0.7	-1.2	-0.5	-0.26
June qtr	470.8	0.7	-1.0	-0.3	-0.19
September qtr p	470.7	0.5	-0.6	-0.1	-0.20
December qtr p	470.4	0.5	-0.7	-0.3	-0.24
<b>2000</b>					
March qtr p	470.3	0.6	-0.8	-0.1	-0.16

(a) Excess of live births registered over deaths registered (based on usual State of residence).

(b) Percentage growth from same quarter in previous year.

Source: Australian Demographic Statistics (Cat. no. 3101.0).

# 2

## BIRTHS, DEATHS AND MARRIAGES(a)

	<i>Births</i>		<i>Deaths</i>		<i>Infant mortality(b)</i>		<i>Marriages</i>	
	<i>no.</i>	<i>rate(c)</i>	<i>no.</i>	<i>rate(d)</i>	<i>no.</i>	<i>rate(e)</i>	<i>no.</i>	<i>rate(f)</i>
<b>1996-97</b>	6 242	1.84	3 798	6.8	30	4.8	2 507	5.3
<b>1997-98</b>	5 870	1.76	3 766	6.6	38	6.5	2 782	5.9
<b>1998-99</b>	6 384	1.95	3 726	6.2	41	6.4	2 483	5.2
<b>1998</b>								
March qtr	1 464	..	839	..	3	2.1	800	..
June qtr	1 420	..	921	..	11	7.8	810	..
September qtr	1 636	..	1 031	..	9	5.5	331	..
December qtr	1 567	..	907	..	8	5.1	658	..
<b>1999</b>								
March qtr	1 545	..	865	..	9	5.8	858	..
June qtr	1 636	..	923	..	15	9.2	636	..
September qtr p	1 555	..	1 035	..	16	10.3	327	..
December qtr p	1 367	..	905	..	9	6.6	678	..
<b>2000</b>								
March qtr p	1 512	..	864	..	7	4.6	910	..

(a) Usual residents of Tasmania.

(b) Deaths of children under one year of age.

(c) Total fertility rate. The sum of age specific fertility rates (live births at each age of a mother per female population of that age). It represents the number of children a woman would bear during her lifetime if she experienced age-specific fertility rates at each age of her reproductive life.

(d) Standardised death rate. The overall death rate, per 1,000 persons, that would have prevailed in a standard population if it had experienced at each age the death rates of the population being studied. The standard population used in these calculations is all persons in the 1991 Australian population.

(e) Rate per 1,000 live births.

(f) Crude marriage rate is the number of marriages registered during the financial year, per 1,000 estimated resident population at 31 December of that year.

Source: Australian Demographic Statistics (Cat. no. 3101.0).

	Seasonally adjusted series(b)				Trend series(b)			
	Employed	Unemployed	Unemployment rate	Participation rate	Employed	Unemployed	Unemployment rate	Participation rate
	'000	'000	%	%	'000	'000	%	%
MALES								
<b>1999</b>								
October	109.8	12.5	10.2	67.9	110.2	12.6	10.3	68.2
November	109.9	13.5	10.9	68.5	110.1	12.5	10.2	68.0
December	110.5	12.4	10.1	68.2	109.9	12.2	10.0	67.8
<b>2000</b>								
January	109.8	11.8	9.7	67.5	109.7	11.9	9.7	67.5
February	109.7	10.9	9.1	66.9	109.5	11.5	9.5	67.2
March	109.3	11.0	9.1	66.7	109.3	11.4	9.5	67.0
April	108.5	11.6	9.7	66.6	109.4	11.6	9.6	67.1
May	109.3	11.9	9.8	67.2	109.6	12.0	9.9	67.4
June	110.2	13.6	11.0	68.6	109.9	12.4	10.1	67.8
July	110.8	11.6	9.5	67.8	110.2	12.7	10.3	68.1
August	110.5	13.6	11.0	68.7	110.5	12.9	10.5	68.3
September	110.6	13.0	10.5	68.4	110.7	13.0	10.5	68.5
October	110.5	12.7	10.3	68.2	110.8	13.1	10.6	68.6
FEMALES								
<b>1999</b>								
October	86.6	7.6	8.1	49.6	87.3	7.5	7.9	50.0
November	88.0	8.0	8.4	50.6	88.0	7.7	8.0	50.4
December	88.9	7.6	7.9	50.8	88.5	7.8	8.1	50.7
<b>2000</b>								
January	89.8	7.9	8.1	51.4	88.9	8.0	8.3	51.0
February	88.3	7.8	8.1	50.6	89.1	8.2	8.4	51.2
March	89.9	8.3	8.5	51.7	89.2	8.3	8.5	51.3
April	88.2	9.2	9.4	51.2	89.2	8.3	8.5	51.3
May	88.7	8.6	8.9	51.2	89.1	8.3	8.5	51.2
June	90.7	7.2	7.4	51.4	89.0	8.2	8.4	51.1
July	88.6	7.5	7.8	50.5	89.0	8.1	8.3	50.9
August	88.7	8.6	8.8	51.1	88.9	8.0	8.2	50.8
September	87.6	8.6	8.9	50.4	88.8	7.9	8.2	50.7
October	89.7	7.4	7.6	50.9	88.8	7.9	8.1	50.7
TOTAL								
<b>1999</b>								
October	196.4	20.2	9.3	58.5	197.5	20.1	9.2	58.8
November	197.9	21.5	9.8	59.3	198.1	20.2	9.2	59.0
December	199.4	20.0	9.1	59.3	198.5	20.1	9.2	59.0
<b>2000</b>								
January	199.6	19.6	9.0	59.2	198.6	19.9	9.1	59.0
February	198.0	18.7	8.6	58.5	198.6	19.7	9.0	59.0
March	199.2	19.3	8.9	59.0	198.6	19.7	9.0	58.9
April	196.7	20.8	9.6	58.7	198.6	19.9	9.1	59.0
May	198.0	20.6	9.4	59.0	198.7	20.3	9.3	59.1
June	200.9	20.8	9.4	59.8	198.9	20.6	9.4	59.2
July	199.5	19.1	8.7	58.9	199.2	20.8	9.4	59.3
August	199.1	22.2	10.0	59.6	199.3	20.9	9.5	59.3
September	198.2	21.6	9.8	59.2	199.4	21.0	9.5	59.4
October	200.2	20.1	9.1	59.3	199.6	20.9	9.5	59.4

(a) For explanation of terms and concepts, refer to Labour Force, Australia, Preliminary (Cat. no. 6202.0).

(b) Seasonal factors are reviewed annually to take account of each additional year's data. The results of the review are used to compile revised seasonally adjusted and trend estimates each February. Trend estimates for the most recent months are also revised each month; see Notes on page 2.

Source: Labour Force, Australia, Preliminary (Cat. no. 6202.0).

# 4

## LABOUR FORCE STATUS BY REGION—MALES(a)(b)

	<i>Total employed</i>	<i>Total unemployed</i>	<i>Unemployment rate</i>	<i>Participation rate</i>
	'000	'000	%	%
<b>HOBART AND SOUTHERN STATISTICAL DIVISIONS</b>				
<b>1997</b>				
October	51.9	6.9	11.7	68.5
<b>1999</b>				
October	53.4	5.6	9.5	66.3
<b>2000</b>				
August	51.9	6.8	11.7	66.6
September	52.8	7.1	11.8	67.6
October	50.5	6.4	11.2	65.1
<b>NORTHERN STATISTICAL DIVISION</b>				
<b>1997</b>				
October	31.9	4.2	11.7	69.0
<b>1999</b>				
October	31.7	3.1	8.9	67.7
<b>2000</b>				
August	33.6	3.1	8.5	70.2
September	34.2	2.8	7.5	70.7
October	35.6	2.9	7.6	72.9
<b>MERSEY-LYELL STATISTICAL DIVISION</b>				
<b>1997</b>				
October	26.7	3.7	12.2	72.1
<b>1999</b>				
October	24.1	3.4	12.4	69.1
<b>2000</b>				
August	23.7	3.4	12.4	67.6
September	23.5	2.9	11.0	66.2
October	23.9	3.0	11.1	66.3
<b>TASMANIA</b>				
<b>1997</b>				
October	110.5	14.8	11.8	69.5
<b>1999</b>				
October	109.2	12.1	10.0	67.3
<b>2000</b>				
August	109.2	13.3	10.9	67.9
September	110.4	12.7	10.3	68.2
October	109.9	12.3	10.1	67.6

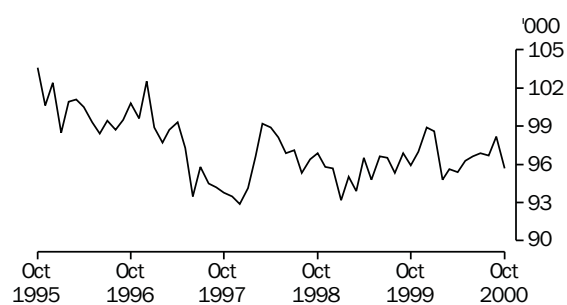
(a) For explanation of terms and concepts, refer to Labour Force, Australia (Cat. no. 6203.0).

(b) Data in this table are original series, i.e. they are not part of a seasonally adjusted or a trend series. Accordingly, care should be exercised when using these data.

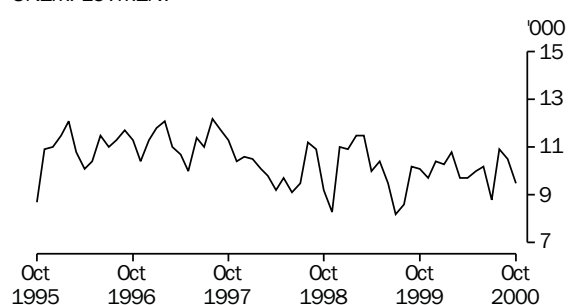
Source: Labour Force, Selected Summary Tables, Australia (Cat. no. 6291.0.40.001).

### Hobart and Southern Statistical Divisions—Persons (see table 6)

#### EMPLOYMENT



#### UNEMPLOYMENT

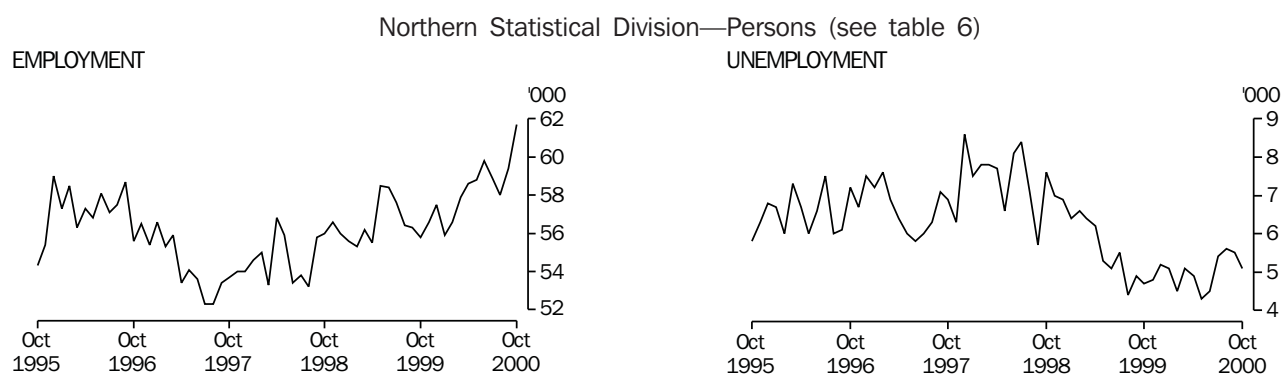


	<i>Total employed</i>	<i>Total unemployed</i>	<i>Unemployment rate</i>	<i>Participation rate</i>
	'000	'000	%	%
<b>HOBART AND SOUTHERN STATISTICAL DIVISIONS</b>				
<b>1997</b>				
October	41.9	4.4	9.6	51.0
<b>1999</b>				
October	42.5	4.5	9.5	49.7
<b>2000</b>				
August	44.7	4.0	8.3	52.4
September	45.4	3.5	7.1	52.2
October	45.1	3.1	6.4	52.1
<b>NORTHERN STATISTICAL DIVISION</b>				
<b>1997</b>				
October	21.8	2.7	10.9	46.4
<b>1999</b>				
October	24.1	1.6	6.2	48.0
<b>2000</b>				
August	24.5	2.5	9.3	48.8
September	25.3	2.7	9.5	50.8
October	26.2	2.1	7.6	50.9
<b>MERSEY-LYELL STATISTICAL DIVISION</b>				
<b>1997</b>				
October	17.6	2.7	13.1	44.6
<b>1999</b>				
October	19.6	2.1	9.7	51.9
<b>2000</b>				
August	18.3	1.9	9.4	48.0
September	17.5	2.4	11.9	47.3
October	17.9	2.7	13.0	48.3
<b>TASMANIA</b>				
<b>1997</b>				
October	81.3	9.8	10.7	48.2
<b>1999</b>				
October	86.2	8.2	8.7	49.7
<b>2000</b>				
August	87.5	8.4	8.8	50.4
September	88.2	8.5	8.8	50.7
October	89.2	7.9	8.1	50.9

(a) For explanation of terms and concepts, refer to Labour Force, Australia (Cat. no. 6203.0).

(b) Data in this table are original series, i.e. they are not part of a seasonally adjusted or a trend series. Accordingly, care should be exercised when using these data.

Source: Labour Force, Selected Summary Tables, Australia (Cat. no. 6291.0.40.001).



## 6

## LABOUR FORCE STATUS BY REGION—PERSONS(a)(b)

	<i>Total employed</i>	<i>Total unemployed</i>	<i>Unemployment rate</i>	<i>Participation rate</i>
	'000	'000	%	%
<b>HOBART AND SOUTHERN STATISTICAL DIVISIONS</b>				
<b>1997</b>				
October	93.8	11.3	10.7	59.5
<b>1999</b>				
October	95.9	10.1	9.5	57.8
<b>2000</b>				
August	96.7	10.9	10.1	59.3
September	98.2	10.5	9.7	59.7
October	95.7	9.5	9.0	58.4
<b>NORTHERN STATISTICAL DIVISION</b>				
<b>1997</b>				
October	53.7	6.9	11.4	57.6
<b>1999</b>				
October	55.8	4.7	7.7	57.6
<b>2000</b>				
August	58.0	5.6	8.8	59.2
September	59.4	5.5	8.4	60.5
October	61.7	5.1	7.6	61.6
<b>MERSEY-LYELL STATISTICAL DIVISION</b>				
<b>1997</b>				
October	44.3	6.4	12.6	57.8
<b>1999</b>				
October	43.7	5.5	11.2	60.3
<b>2000</b>				
August	42.0	5.3	11.1	57.5
September	41.0	5.3	11.4	56.5
October	41.8	5.7	11.9	57.1
<b>TASMANIA</b>				
<b>1997</b>				
October	191.9	24.5	11.3	58.6
<b>1999</b>				
October	195.4	20.3	9.4	58.3
<b>2000</b>				
August	196.7	21.8	10.0	58.9
September	198.6	21.2	9.7	59.2
October	199.2	20.2	9.2	59.1

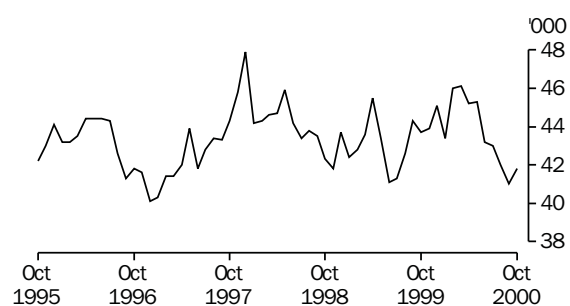
(a) For explanation of terms and concepts, refer to Labour Force, Australia (Cat. no. 6203.0).

(b) Data in this table are original series, i.e. they are not part of a seasonally adjusted or a trend series. Accordingly, care should be exercised when using these data.

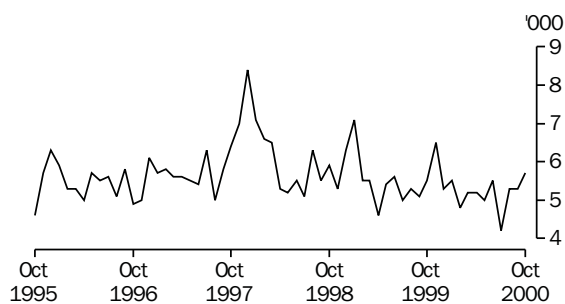
Source: Labour Force, Selected Summary Tables, Australia (Cat. no. 6291.0.40.001).

## Mersey-Lyell Statistical Division—Persons (see table 6)

## EMPLOYMENT



## UNEMPLOYMENT



## 7

## TEENAGE LABOUR MARKET(a)

	<i>Employed</i>		<i>Unemployed</i>		<i>Labour force</i>	<i>Not in labour force</i>	<i>Civilian population aged 15–19</i>	<i>Unemployment rate</i>	<i>Unemployment population ratio</i>	<i>Participation rate</i>
	<i>Full time</i>	<i>Total</i>	<i>Looking for full time work</i>	<i>Total</i>						
	'000	'000	'000	'000	'000	'000	'000	%	%	%
ATTENDING NEITHER A SCHOOL NOR A TERTIARY INSTITUTION FULL TIME										
<b>1997</b>										
October	5.6	7.9	2.6	2.8	10.7	1.4	12.0	26.2	23.2	88.7
<b>1999</b>										
October	6.6	8.3	1.2	1.4	9.6	1.7	11.3	14.4	12.3	85.2
<b>2000</b>										
August	5.6	7.7	2.3	2.5	10.2	1.5	11.7	24.8	21.6	87.3
September	5.6	8.0	1.7	1.8	9.8	1.3	11.1	18.3	16.3	88.7
October	4.3	7.1	2.6	2.6	9.7	0.8	10.5	27.0	24.9	92.5
ATTENDING SCHOOL OR A TERTIARY INSTITUTION FULL TIME										
<b>1997</b>										
October	0.1	6.3	0.7	1.9	8.2	14.0	22.2	23.2	8.6	37.1
<b>1999</b>										
October	0.0	6.8	0.7	2.1	8.9	14.5	23.4	23.6	9.0	37.9
<b>2000</b>										
August	0.1	7.1	0.7	2.7	9.8	13.2	23.0	27.7	11.9	42.8
September	0.3	7.3	0.3	1.9	9.1	14.5	23.6	20.5	7.9	38.7
October	0.2	8.0	0.4	2.3	10.2	13.9	24.2	22.2	9.4	42.3
TOTAL										
<b>1997</b>										
October	5.7	14.2	3.2	4.7	18.9	15.3	34.2	24.9	13.7	55.2
<b>1999</b>										
October	6.6	15.0	1.9	3.5	18.5	16.2	34.7	18.8	10.0	53.3
<b>2000</b>										
August	5.8	14.8	3.0	5.3	20.1	14.7	34.8	26.2	15.2	57.8
September	6.0	15.3	2.0	3.7	19.0	15.7	34.7	19.4	10.6	54.7
October	4.5	15.1	3.0	4.9	20.0	14.7	34.7	24.5	14.1	57.5

(a) Persons aged 15–19 years. For explanation of terms and concepts, refer to Labour Force, Australia (Cat. no. 6203.0). Care should be exercised when using these series as some estimates are subject to high sampling variability.

Source: Unpublished data, Labour Force, Estimates; Labour Force, Teenage Employment and Unemployment, Australia, Preliminary, Data Report (Cat. no. 6202.0.40.001).

	August 1999	August 2000			Proportion of total employed	
	Persons	Males	Females	Persons	August 1999	August 2000
	'000	'000	'000	'000	%	%
Managers and administrators						
Generalist managers	2.1	1.8	0.2	2.0	1.1	1.0
Specialist managers	3.4	2.8	1.2	4.0	1.8	1.6
Farmers and farm managers	8.8	5.3	2.2	7.5	4.5	3.9
Total	14.3	9.6	3.0	12.7	7.3	6.4
Professionals						
Science, building and engineering professionals	2.7	2.4	0.5	2.9	1.4	1.5
Business and information professionals	4.3	3.5	1.9	5.4	2.2	2.8
Health professionals	7.9	2.0	6.2	8.2	4.1	4.2
Education professionals	9.9	3.8	6.4	10.2	5.1	5.2
Social, arts and miscellaneous professionals	7.4	4.0	2.4	6.4	3.8	3.2
Total	32.2	15.7	17.4	33.1	16.6	16.8
Associate professionals						
Science, engineering and related associate professionals	2.5	1.7	0.3	2.0	1.3	1.0
Business and administration associate professionals	4.5	2.3	2.3	4.6	2.3	2.3
Managing supervisors (sales and service)	8.7	5.8	3.1	8.9	4.5	4.5
Health and welfare associate professionals	1.1	0.3	0.8	1.1	0.6	0.6
Other associate professionals	3.4	1.9	2.1	3.9	1.8	2.0
Total	19.1	11.6	7.8	19.4	9.8	9.9
Tradespersons and related workers						
Mechanical and fabrication engineering tradespersons	5.1	4.7	—	4.7	2.6	2.4
Automotive tradespersons	2.5	2.5	—	2.5	1.3	1.3
Electrical and electronics tradespersons	5.3	4.3	—	4.3	2.7	2.2
Construction tradespersons	5.3	5.5	0.1	5.6	2.7	2.8
Other tradespersons and related workers	8.0	7.0	2.7	9.7	4.1	4.9
Total	26.1	24.0	2.8	26.8	13.4	13.6
Advanced clerical and service workers						
Secretaries and personal assistants	2.6	—	2.0	2.0	1.3	1.0
Other advanced clerical and service workers	2.7	0.7	2.1	2.8	1.4	1.4
Total	5.2	0.7	4.1	4.8	2.7	2.4
Intermediate clerical, sales and service workers						
Intermediate clerical workers	22.6	5.4	15.4	20.8	11.6	10.6
Intermediate sales and related workers	3.3	2.3	0.6	2.9	1.7	1.5
Intermediate service workers	13.6	2.9	9.5	12.4	7.0	6.3
Total	39.5	10.5	25.6	36.1	20.3	18.3
Intermediate production and transport workers						
Intermediate plant operators	4.8	5.9	0.1	6.0	2.5	3.1
Intermediate machine operators	2.6	1.4	1.0	2.5	1.3	1.3
Road and rail transport drivers	7.3	6.1	0.3	6.4	3.8	3.3
Other intermediate production and transport workers	4.9	4.1	1.1	5.2	2.5	2.6
Total	19.6	17.6	2.5	20.1	10.1	10.2
Elementary clerical, sales and service workers						
Elementary clerks	1.2	0.7	0.8	1.5	0.6	0.7
Elementary sales workers	16.1	5.6	12.8	18.4	8.3	9.3
Elementary service workers	1.1	1.2	1.6	2.8	0.6	1.4
Total	18.4	7.4	15.2	22.6	9.5	11.5
Labourers and related workers						
Cleaners	4.6	1.7	4.0	5.8	2.4	2.9
Factory labourers	5.5	3.4	1.7	5.1	2.8	2.6
Other labourers and related workers	9.8	6.9	3.4	10.3	5.0	5.2
Total	20.0	12.0	9.2	21.1	10.3	10.8
<b>Total employed</b>	<b>194.3</b>	<b>109.2</b>	<b>87.5</b>	<b>196.7</b>	<b>100.0</b>	<b>100.0</b>

(a) For explanation of terms and concepts, refer to Labour Force, Australia (Cat. no. 6203.0).

Source: Unpublished data, Labour Force, Estimates.

## 9

### WAGE AND SALARY EARNERS, SECTOR AND INDUSTRY(a)

	Employees, May 2000			Percentage distribution	
	Private	Public	Total	May 1999	May 2000
	'000	'000	'000	%	
Agriculture, forestry & fishing	n.a.	0.6	0.6	0.4	0.4
Mining	1.7	—	1.7	0.7	1.1
Manufacturing	n.p.	n.p.	20.4	14.0	12.9
Electricity, gas & water, Construction	4.0	1.9	5.9	4.3	3.7
Wholesale & Retail trade	34.2	—	34.2	22.8	21.7
Accommodation, cafes & restaurants	9.7	—	9.7	7.0	6.2
Transport & storage	5.5	0.8	6.3	3.5	4.0
Communication services	n.p.	n.p.	2.2	1.3	1.4
Finance, insurance, Property & business services	14.2	0.7	15.0	8.7	9.5
Government administration and defence	—	9.4	9.4	6.0	6.0
Education	3.6	14.4	18.0	11.0	11.4
Health and community services	14.2	8.6	22.9	14.3	14.5
Cultural, recreational, Personal and other services	8.3	3.1	11.4	6.0	7.2
<b>Total all industries</b>	<b>116.2</b>	<b>41.5</b>	<b>157.7</b>	<b>100.0</b>	<b>100.0</b>

(a) For explanation of terms and concepts, refer to Wage and Salary Earners, Australia (Cat. no. 6248.0).

Source: Wage and Salary Earners, Australia (Cat. no. 6248.0).

## 10

### AVERAGE HOURS WORKED

	Average weekly total hours worked, all employed persons(a)		
	Males	Females	Persons
<b>1999</b>			
May	38.8	28.0	34.0
August	39.2	28.1	34.3
November	39.8	27.2	34.1
<b>2000</b>			
February	37.1	24.7	31.6
May	38.9	28.1	34.1
August	38.1	26.7	33.0

(a) For explanation of terms and concepts, refer to Labour Force, Australia (Cat. no. 6203.0).

Source: Unpublished data.



# 11

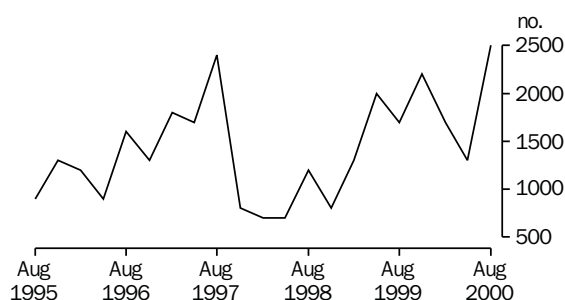
## JOB VACANCIES(a)(b)

	no. '000	rate(c) %
<b>1999</b>		
May	2.0	1.4
August	1.7	1.0
November	2.2	1.3
<b>2000</b>		
February	1.7	1.0
May	1.3	0.8
August	2.5	1.5

- (a) For explanation of terms and concepts, refer to Job Vacancies, Australia (Cat. no. 6354.0).  
 (b) Care should be exercised in using these series as some estimates are subject to high sampling variability.  
 (c) Job vacancies expressed as a percentage of the number of employees plus job vacancies.

Source: Job Vacancies, Australia (Cat.no. 6354.0)

### JOB VACANCIES



# 12

## INDUSTRIAL DISPUTES(a)

	Working days lost '000	Twelve months ended	Working days lost per thousand employees no.
<b>1999</b>		<b>1999</b>	
August	0.1	August	6
September	—	September	5
October	—	October	5
November	—	November	3
December	—	December	2
<b>2000</b>		<b>2000</b>	
January	0.1	January	3
February	—	February	3
March	0.2	March	4
April	0.2	April	5
May	0.2	May	6
June	0.2	June	6
July	—	July	6
August	—	August	6
<b>Twelve months ended</b>			
August 2000	0.9		

- (a) For explanation of terms and concepts, refer to Industrial Disputes, Australia (Cat. no. 6321.0).

Source: Industrial Disputes, Australia (Cat.no. 6321.0).

## AVERAGE WEEKLY EARNINGS OF EMPLOYEES(a)—ORIGINAL AND TREND

	<i>Full time adult males</i>		<i>All males</i>	<i>Full time adult females</i>		<i>All females</i>	<i>Full time adult persons</i>		<i>All employees</i>
	<i>Weekly ordinary time earnings</i>	<i>Weekly total earnings</i>	<i>Weekly total earnings</i>	<i>Weekly ordinary time earnings</i>	<i>Weekly total earnings</i>	<i>Weekly total earnings</i>	<i>Weekly ordinary time earnings</i>	<i>Weekly total earnings</i>	<i>Weekly total earnings</i>
	\$	\$	\$	\$	\$	\$	\$	\$	\$
ORIGINAL									
<b>1999</b>									
May	731.90	771.20	657.80	613.70	625.30	421.00	692.00	722.00	539.60
August	749.70	778.50	660.50	619.10	629.90	420.70	703.60	726.10	537.60
November	761.00	801.60	682.50	641.30	658.90	433.90	719.00	751.50	554.90
<b>2000</b>									
February	767.70	799.30	686.20	639.60	656.70	444.20	723.90	750.60	566.70
May	788.10	828.20	695.80	643.40	659.10	428.00	737.20	768.80	558.10
August	784.20	819.60	677.60	645.40	660.90	422.90	736.50	765.10	547.40
TREND(b)									
<b>1999</b>									
May	743.00	784.20	671.10	618.80	630.90	420.60	700.80	732.30	545.30
August	748.10	784.60	670.40	625.10	638.10	427.30	705.80	734.10	547.10
November	757.70	792.00	675.30	632.60	647.50	432.90	713.80	741.30	551.90
<b>2000</b>									
February	770.40	805.60	683.20	639.10	655.50	434.90	724.20	752.90	557.40
May	782.50	818.50	688.70	645.00	661.90	432.30	734.90	764.30	558.80
August	793.90	831.80	694.40	650.30	667.10	426.80	745.30	775.90	557.60

(a) For explanation of terms and concepts, refer to Average Weekly Earnings, States and Australia (Cat. no. 6302.0).

(b) ABS trend estimates for the most recent months are revised, see Notes on page 2.

Source: Average Weekly Earnings, States and Australia (Cat. no. 6302.0).

	Index numbers				Percentage change		
	Sept qtr 1999	Dec qtr 1999	Mar qtr 2000	June qtr 2000	Sep qtr 1999 to Dec qtr 1999	Dec qtr 1999 to Mar qtr 2000	Mar qtr 2000 to June qtr 2000
SELECTED INDUSTRIES(c)							
Manufacturing	105.2	105.8	106.6	107.0	0.6	0.8	0.4
Retail trade	105.1	105.7	106.0	106.5	0.6	0.3	0.5
Transport & storage	107.2	107.6	108.0	n.a.	0.4	0.4	—
Government administration and defence	104.4	104.7	104.8	105.4	0.3	0.1	0.6
Education	107.9	107.9	108.3	108.5	—	0.4	0.2
Health and community services	103.8	104.7	104.9	105.4	0.9	0.2	0.5
<b>Total all industries(d)</b>	<b>105.5</b>	<b>106.0</b>	<b>106.5</b>	<b>106.9</b>	<b>0.5</b>	<b>0.5</b>	<b>0.4</b>
OCCUPATION							
Professionals	106.5	106.8	107.2	107.5	0.3	0.4	0.3
Associate Professionals	105.5	105.9	106.4	106.9	0.4	0.5	0.5
Tradespersons & related workers	105.0	105.6	106.2	106.5	0.6	0.6	0.3
Intermediate clerical, sales & service workers	105.1	105.7	106.0	106.2	0.6	0.3	0.2
Intermediate production & transport workers	105.4	105.8	106.3	106.8	0.4	0.5	0.5
Elementary clerical, sales & service workers	107.5	108.0	108.6	109.3	0.5	0.6	0.6
Labourers & related workers	104.4	105.0	105.5	105.8	0.6	0.5	0.3
<b>All occupations</b>	<b>105.5</b>	<b>106.0</b>	<b>106.5</b>	<b>106.9</b>	<b>0.5</b>	<b>0.5</b>	<b>0.4</b>

(a) Base of each index: September quarter 1997 = 100.0.

(b) These indexes are a measure of quarterly changes in wage and salary costs for employee jobs. They were compiled for the first time for the December quarter 1997. They are one of four sets of indexes that together comprise the Wage Cost Index. For explanation of terms and concepts, refer to Wage Cost Index, Australia (Cat. no. 6345.0).

(c) Industry is shown at the ANZSIC division level for selected divisions.

(d) Excludes Agriculture, forestry and fishing.

Source: Unpublished data.

# 15

## SUMMARY OF ANNUAL MOVEMENTS IN WAGES AND PRICES(a)

	<i>CPI all groups–Hobart(b)</i>	<i>Price index of materials used in house building all groups–Hobart(c)</i>	<i>Price index of materials used in building other than house building all groups–Hobart(c)</i>	<i>Average weekly total earnings, full-time adult employees(d)</i>
<b>1997–98</b>	–0.1	0.7	0.9	5.1
<b>1998–99</b>	1.0	1.0	0.9	2.4
<b>1999–2000</b>	1.9	1.3	0.4	2.5
<b>1998</b>				
September	1.8	1.8	1.6	3.3
December	1.2	1.4	1.2	3.3
<b>1999</b>				
March	0.5	0.7	0.7	3.4
June	0.4	–0.1	0.2	–0.3
September	0.4	–0.3	0.1	0.8
December	1.1	0.2	–0.2	2.3
<b>2000</b>				
March	2.6	2.0	0.6	0.6
June	3.3	3.4	1.2	6.5
September	6.5	(e)2.5	(e)–0.5	5.4

(a) Weekly award rates of pay collection has been discontinued from June 1997.

(b) See note 5 on page 2 of this issue on the impacts of The New Tax System (TNTS) introduced on 1 July 2000.

(c) Only quarterly data collected from June 1997. Earlier data has been re-compiled from monthly to quarterly.

(d) March, June, September and December data relates to February, May, August and November survey dates as published in 6302.2.

(e) This quarter affected by the removal of the Wholesale Sales Tax from 1 July 2000.

Source: Consumer Price Index, Australia (Cat. no. 6401.0); Price Index of Materials Used in House Building, Six State Capital Cities (Cat. no. 6408.0), (quarterly from June 1997); Price Index of Materials Used in Other than House Building, Six State Capital Cities (Cat. no. 6407.0), (quarterly from June 1997); Average Weekly Earnings, States and Australia (Cat. no. 6302.0).

# 16

## HOUSE PRICE INDEX NUMBERS(a)(b)

	<i>Established house price index</i>		<i>Project home price index</i>	
	<i>Index</i>	<i>% change(c)</i>	<i>Index</i>	<i>% change(c)</i>
<b>1997–98</b>	125.4	–2.4	123.3	—
<b>1998–99</b>	123.2	–1.8	123.3	—
<b>1999–2000</b>	129.0	4.7	126.2	2.4
<b>1998</b>				
June	124.8	–3.6	123.3	—
September	123.8	–0.8	123.3	—
December	121.7	–1.7	123.3	—
<b>1999</b>				
March	123.7	1.6	123.3	—
June	123.6	–0.1	123.3	—
September	125.3	1.4	124.0	0.6
December	127.8	2.0	125.4	1.1
<b>2000</b>				
March	128.6	0.6	127.5	1.7
June	134.2	4.4	127.9	0.3

(a) Base of each Index: 1989–90 = 100.

(b) Used in calculating the mortgage interest charges component of the Consumer Price Index.

(c) Percentage change over previous period.

Source: House Price Indexes: Eight Capital Cities (Cat. no. 6416.0).

Hobart

	Food	Clothing and Footwear	Housing	Household furnishings, supplies and services	Transportation	Alcohol and tobacco
<b>1997</b>						
September	121.0	104.8	97.7	119.7	122.2	153.6
December	121.7	106.0	95.5	119.7	122.1	155.6
<b>1998</b>						
March	121.7	105.5	95.3	119.4	121.7	158.0
June	122.3	105.3	95.5	119.5	120.5	160.2
September	124.7	105.1	95.6	120.4	120.4	159.6
December	125.0	105.7	95.4	120.8	118.6	159.1
<b>1999</b>						
March	125.5	104.7	95.8	119.5	118.4	161.5
June	126.8	104.6	95.9	119.4	120.4	160.0
September	126.3	104.5	96.9	119.3	123.1	158.1
December	127.5	103.9	97.4	119.1	123.8	163.3
<b>2000</b>						
March	127.8	104.9	98.8	120.2	126.6	167.2
June	129.1	105.0	99.2	121.2	129.3	169.9
September	130.9	112.8	105.5	124.5	133.3	179.8

Hobart

Weighted average of eight capital cities

	Health	Education	Index, all groups	% change over previous period, all groups	Index	% change over previous period
<b>1997</b>						
September	164.9	182.3	120.6	-0.6	119.7	-0.4
December	175.7	182.3	121.2	0.5	120.0	0.3
<b>1998</b>						
March	178.6	190.0	121.5	0.2	120.3	0.3
June	183.0	190.0	122.0	0.4	121.0	0.6
September	190.4	190.0	122.8	0.7	121.3	0.2
December	187.8	190.0	122.7	-0.1	121.9	0.5
<b>1999</b>						
March	164.9	198.8	122.1	-0.5	121.8	-0.1
June	165.7	198.8	122.5	0.3	122.3	0.4
September	173.3	198.8	123.3	0.7	123.4	0.9
December	172.0	198.8	124.0	0.6	124.1	0.6
<b>2000</b>						
March	175.1	206.2	125.3	1.0	125.2	0.9
June	177.7	206.2	126.5	1.0	126.2	0.8
September	178.0	206.5	131.3	3.8	130.9	3.7

(a) Base year: 1989-90 = 100.

(b) Further information on construction of CPI indexes is contained in the bulletin Australian Consumer Price Index Concepts, Sources and Methods (Cat. no. 6461.0).

(c) As a result of the introduction of the 14th Series Australian CPI there have been changes to some groups and restructuring of some others. See Appendix A4 of the September quarter issue of Consumer Price Index, Australia (Cat. no. 6401.0) for more information.

(d) See Note 5 on page 2 of this issue on the impacts of The New Tax System (TNTS) introduced on 1 July 2000.

Source: Consumer Price Index, Australia (Cat. no. 6401.0).

*Index numbers for selected major building materials*

	<i>Structural timber</i>	<i>Clay bricks</i>	<i>Ready mixed concrete</i>	<i>Precast concrete products</i>	<i>Steel decking, cladding etc.</i>	<i>Structural steel</i>
<b>1996-97</b>	110.3	125.3	116.2	132.2	115.0	126.2
<b>1997-98</b>	108.9	129.0	118.0	131.5	117.8	127.2
<b>1998-99</b>	109.1	130.8	119.5	131.6	110.8	128.0
<b>1998</b>						
June	112.4	129.4	119.9	131.7	114.3	127.4
September	109.4	130.2	119.2	131.7	111.3	127.7
December	108.9	131.1	120.6	131.7	111.3	128.1
<b>1999</b>						
March	108.9	131.1	120.4	131.5	110.3	128.1
June	109.2	130.8	117.9	131.5	110.3	128.1
September	108.2	126.9	119.4	131.6	113.7	128.8
December	111.7	126.9	118.0	131.6	104.6	128.8
<b>2000</b>						
March	116.9	130.9	117.5	131.6	110.1	128.8
June	120.7	131.6	117.5	131.6	109.8	128.8
September(c)	120.9	131.6	117.6	131.6	106.4	129.1

*Index numbers for selected major building materials*

	<i>Reinforcing steel bar, fabric and mesh</i>	<i>Aluminium windows</i>	<i>Fabricated steel products</i>	<i>Builders hardware</i>	<i>Sand and aggregate</i>	<i>Paint and other coatings</i>	<i>Non-ferrous pipes and fittings</i>
<b>1996-97</b>	110.7	105.9	113.3	117.2	132.7	126.6	165.2
<b>1997-98</b>	112.7	107.2	114.7	113.7	124.5	127.3	164.3
<b>1998-99</b>	113.4	107.3	116.0	113.4	127.9	133.3	161.2
<b>1998</b>							
June	113.4	108.4	116.1	114.0	127.5	130.7	162.6
September	113.4	108.4	116.1	113.7	127.9	132.7	162.8
December	113.3	106.7	116.1	113.9	127.9	133.9	160.2
<b>1999</b>							
March	113.4	106.9	116.1	114.8	127.9	134.2	161.4
June	113.4	107.0	115.6	111.3	127.9	132.5	160.2
September	113.4	107.0	116.1	110.8	135.4	131.7	162.4
December	110.2	107.0	113.6	114.8	139.4	133.5	166.0
<b>2000</b>							
March	109.1	109.9	113.1	120.2	150.4	135.2	167.2
June	109.1	110.1	113.1	118.1	150.9	134.2	177.0
September(c)	107.8	110.1	113.1	117.3	145.5	131.8	177.2

(a) Base year: 1989-90 = 100.

(b) Index numbers in this table have been recompiled to reflect the change to a quarterly collection basis from June 1997.

(c) this quarter affected by the removal of the Wholesale Sales Tax from 1 July 2000.

	<i>All electrical materials</i>		<i>All mechanical services</i>		<i>All plumbing materials</i>	
	<i>Index</i>	<i>% change over previous period</i>	<i>Index</i>	<i>% change over previous period</i>	<i>Index</i>	<i>% change over previous period</i>
<b>1996-97</b>	117.4	-1.0	117	1.7	122.8	-3.8
<b>1997-98</b>	117.2	-0.2	117	—	121.9	-0.7
<b>1998-99</b>	115.8	-1.2	119	1.7	124.5	2.1
<b>1998</b>						
June	116.5	-0.3	117.1	-0.3	121	-0.5
September	116.1	-0.3	117.8	0.6	124.9	3.2
December	116.8	0.6	119.1	1.1	124.1	-0.6
<b>1999</b>						
March	115.2	-1.4	119.4	0.3	124.4	0.2
June	115.2	—	119.5	0.1	124.5	0.1
September	115.9	0.6	119.3	-0.2	122.3	-1.8
December	117.5	1.4	119.8	0.4	126.5	3.4
<b>2000</b>						
March	118.3	0.7	120.3	0.4	128	1.2
June	118.7	0.3	121.9	1.3	131	2.3
September(c)	115.8	-2.4	117.3	-3.8	129.1	-1.5
	<i>All groups excluding electrical materials and mechanical services</i>		<i>All groups</i>			
	<i>Index</i>	<i>% change over previous period</i>	<i>Index</i>	<i>% change over previous period</i>		
<b>1996-97</b>	116.8	1.1	116.3	1		
<b>1997-98</b>	118	1	117.4	0.9		
<b>1998-99</b>	118.8	0.7	118.5	0.9		
<b>1998</b>						
June	118.9	0.6	118.1	0.3		
September	119.1	0.2	118.4	0.3		
December	119	-0.1	118.6	0.2		
<b>1999</b>						
March	118.8	-0.2	118.5	-0.1		
June	118.4	-0.3	118.3	-0.2		
September	118.8	0.3	118.5	0.2		
December	118.4	-0.3	118.4	-0.1		
<b>2000</b>						
March	119.3	0.8	119.2	0.7		
June	119.7	0.3	119.7	0.4		
September(c)	118.8	-0.8	117.9	-1.5		

(a) Base year: 1989-90 = 100.

(b) Index numbers in this table have been recompiled to reflect the change to a quarterly collection basis from June 1997.

(c) this quarter affected by the removal of the Wholesale Sales Tax from 1 July 2000.

Source: *Price Index of Materials Used in Other than House Building, Six State Capital Cities (Cat. no. 6407.0)*.

	<i>Dairy products(a)</i>			<i>Staff hours worked</i>	
	<i>Whole milk(b)</i>	<i>Factory butter(c)</i>	<i>Factory cheese</i>	<i>Textile manufacturing(d)</i>	<i>Vegetable preserving</i>
	<i>million litres</i>	<i>tonnes</i>	<i>tonnes</i>	<i>'000</i>	<i>'000</i>
<b>1997-98</b>	542.8	8 745	26 835	1 125	1 128
<b>1998-99</b>	603.4	11 546	29 973	1 061	1 084
<b>1999-2000</b>	608.6	8 209	33 331	1 032	1 019
<b>1999</b>					
September	60.8	406	3 599	96	62
October	89.3	1 257	3 850	92	66
November	87.1	1 508	4 054	94	104
December	81.6	1 562	4 714	71	87
<b>2000</b>					
January	66.8	879	3 735	43	60
February	51.7	378	3 473	96	90
March	47.3	608	3 804	103	92
April	38.0	363	2 857	75	88
May	29.7	232	983	107	107
June	17.5	465	670	83	90
July	n.y.a.	n.y.a.	n.y.a.	82	80
August	n.y.a.	n.y.a.	n.y.a.	99	97
September	n.y.a.	n.y.a.	n.y.a.	75	62
		<i>Refined zinc</i>	<i>Metallurgical refining</i>	<i>Electricity(f)</i>	
		<i>'000 tonnes</i>	<i>Index(e)</i>	<i>million kW.h</i>	
<b>1997-98</b>		197.0	116.6	9 700	
<b>1998-99</b>		214.3	125.0	9 910	
<b>1999-2000</b>		231.7	133.2	10 050.0	
<b>1999</b>					
September		19.1	130.2	(Sept qtr) 2 680	
October		19.4	130.5		
November		19.9	130.3		
December		19.3	129.6	(Dec qtr) 2 390	
<b>2000</b>					
January		20.1	130.3		
February		18.6	126.4		
March		19.6	141.2	(Mar qtr) 2 360	
April		18.7	133.8		
May		18.7	136.4		
June		18.7	137.2	(June qtr) 2 620	
July		20.6	144.0		
August		21.0	143.8		
September		18.0	134.3	(Sept qtr) 2 760	

(a) Source: Australian Dairy Corporation.

(b) Includes the whole milk equivalent of farm cream intake.

(c) Includes butter equivalent of butter oil.

(d) Includes spinning, weaving and carpet making. Reported by establishments which manufacture textiles only, or manufacture clothing and textiles in the one plant.

(e) Metallurgical refining index (Base year: 1979-80 = 100.0). Output from selected establishments covering the smelting and refining of ferro-alloys, zinc and aluminium. The weighting pattern is based on the establishments' value added as derived from the 1979-80 manufacturing Census. For multi product establishments, value added was apportioned to products on the basis of gross receipts from each product.

(f) Collected on a quarterly basis as from 1997.

Source: Unpublished data.



## 20

### LIVESTOCK SLAUGHTERING

	Cattle					
	Bulls, bullocks and steers	Cows and heifers	Calves	Sheep	Lambs	Pigs
	'000	'000	'000	'000	'000	'000
<b>1997–98</b>	93.4	123.6	53.9	461.0	423.3	78.1
<b>1998–99</b>	94.8	116.3	61.0	439.9	480.1	81.2
<b>1999–2000</b>	109.0	108.9	62.1	589.9	456.3	70.1
<b>1998</b>						
September	5.8	8.2	26.0	19.8	43.0	6.9
<b>1999</b>						
September	8.0	6.6	27.2	24.3	32.0	6.9
October	8.0	7.8	7.7	38.7	33.6	4.5
November	8.4	7.8	0.9	45.6	31.3	4.7
December	9.6	10.1	0.2	67.5	36.5	7.2
<b>2000</b>						
January	8.9	8.1	0.2	55.6	38.4	4.3
February	9.3	10.1	0.2	68.0	46.0	5.3
March	11.7	11.1	0.8	76.4	55.5	6.8
April	8.3	8.5	1.4	53.1	32.3	4.9
May	9.0	11.6	1.7	48.2	37.5	5.7
June	9.1	12.9	0.9	51.5	44.1	6.7
July	7.0	6.7	1.2	23.0	36.2	5.0
August	5.7	3.7	15.2	17.9	39.1	4.8
September	6.2	4.3	22.9	20.5	38.0	4.8

Source: Unpublished data.

## 21

### LIVESTOCK SLAUGHTERING—SEASONALLY ADJUSTED(a) AND TREND(b)

	Seasonally adjusted			Trend		
	Cattle and calves	Sheep and lambs	Pigs	Cattle and calves	Sheep and lambs	Pigs
	'000	'000	'000	'000	'000	'000
<b>1998</b>						
September	25.3	92.5	6.8	23.1	70.3	6.8
<b>1999</b>						
August	25.5	98.6	7.5	24.4	85.8	6.4
September	24.7	84.5	6.4	24.0	86.4	6.2
October	23.9	95.4	5.3	23.6	85.7	6.0
November	22.1	82.2	5.7	23.3	84.7	5.8
December	19.8	79.1	5.7	23.2	84.1	5.7
<b>2000</b>						
January	25.7	80.9	5.6	23.3	84.3	5.7
February	23.9	85.9	6.0	23.6	85.0	5.7
March	26.1	93.5	5.8	23.5	85.7	5.6
April	20.1	82.4	5.4	22.8	86.3	5.5
May	22.1	85.2	5.2	21.7	86.2	5.3
June	22.2	92.0	5.1	20.5	85.7	5.1
July	18.6	75.3	5.1	19.4	85.4	5.0
August	16.2	89.1	4.6	18.6	85.5	4.9
September	19.6	88.1	5.1	17.9	85.6	4.8

(a) Seasonally adjusted factors are reviewed annually to take account of each additional year's original data. The results of the review are used to compile revised seasonally adjusted and trend estimates; see Notes page 2.

(b) ABS trend estimates for the most recent months are revised; see Notes page 2.

Source: Unpublished data.

## 22

### MEAT PRODUCTION(a)

	<i>Beef</i>	<i>Veal</i>	<i>Mutton</i>	<i>Lamb</i>	<i>Pigmeat(b)</i>	<i>Total</i>
	<i>tonnes</i>	<i>tonnes</i>	<i>tonnes</i>	<i>tonnes</i>	<i>tonnes</i>	<i>tonnes</i>
<b>1997-98</b>	53 061	1 148	9 840	8 072	4 915	77 042
<b>1998-99</b>	53 273	1 242	8 725	9 223	5 241	77 701
<b>1999-2000</b>	57 559	1 235	11 797	8 835	4 403	83 825
<b>1998</b>						
September	3 361	512	365	823	442	5 503
<b>1999</b>						
September	3 897	524	480	621	439	5 961
October	4 187	154	754	650	282	6 026
November	4 348	19	926	601	286	6 180
December	5 277	6	1 414	695	424	7 816
<b>2000</b>						
January	4 662	7	1 120	731	269	6 789
February	5 154	7	1 364	884	333	7 741
March	6 091	20	1 518	1 071	425	9 125
April	4 455	31	1 052	619	308	6 465
May	5 317	37	949	729	366	7 399
June	5 529	20	1 012	867	436	7 863
July	3 581	26	445	693	324	5 068
August	2 528	293	338	771	299	4 230
September	2 886	444	402	739	304	4 775

(a) Carcass weight.

(b) Includes pork used for production of bacon and ham.

Source: Unpublished data.

## 23

### PRINCIPAL MINERAL CONCENTRATES PRODUCED

	<i>Copper</i>	<i>Iron (pellets)</i>	<i>Lead</i>	<i>Lead-zinc</i>	<i>Tin</i>	<i>Zinc</i>
	<i>'000 tonnes</i>	<i>'000 tonnes</i>	<i>'000 tonnes</i>	<i>'000 tonnes</i>	<i>'000 tonnes</i>	<i>'000 tonnes</i>
<b>1997-98</b>	109.6	820.8	84.6	26.2	16.2	335.4
<b>1998-99</b>	113.5	1816.1	101.8	12.6	12.5	382.3
<b>1999-2000</b>	104.3	2068.3	98.7	7.9	14.8	311.9
<b>1998</b>						
September	25.8	453.3	21.5	5.6	1.3	92.0
December	29.9	478.2	26.1	3.2	4.0	95.3
<b>1999</b>						
March	30.5	481.2	29.5	2.5	3.7	97.1
June	27.3	403.4	24.7	1.5	3.6	98.0
September	27.5	479.5	28.4	2.7	3.9	94.8
December	26.9	568.2	28.1	2.5	4.0	86.2
<b>2000</b>						
March	26.2	517.7	22.4	1.4	3.3	70.4
June	23.8	502.9	19.8	1.3	3.6	60.4
September p	n.y.a.	544.2	7.7	—	3.2	26.9

Source: Mineral Resources Tasmania, Department of Infrastructure, Energy and Resources.

	Tasmanian-grown logs delivered					Sawn, peeled and sliced timber produced(a)				
	<i>Eucalypts</i>	<i>Hardwoods, excluding eucalypts(b)</i>	<i>Plant-ation(c)</i>	<i>Native soft-woods(d)</i>	<i>Total</i>	<i>Eucalypts</i>	<i>Hardwoods, excluding eucalypts(b)</i>	<i>Plant-ation(c)</i>	<i>Native soft-woods(d)</i>	<i>Total</i>
	'000 m <sup>3</sup>	'000 m <sup>3</sup>	'000 m <sup>3</sup>	'000 m <sup>3</sup>	'000 m <sup>3</sup>	'000 m <sup>3</sup>	'000 m <sup>3</sup>	'000 m <sup>3</sup>	'000 m <sup>3</sup>	'000 m <sup>3</sup>
<b>1997-98</b>	496.8	24.3	357.7	1.6	880.3	171.1	5.3	167.3	0.4	344.2
<b>1998-99</b>	499.9	22.6	351.9	1.0	875.4	159.7	5.1	169.7	0.3	334.8
<b>1999-2000</b>	510.1	28.8	396.2	0.9	936.9	169.7	5.3	190.6	0.4	366.0
<b>1998</b>										
September	129.9	3.8	88.7	0.2	222.7	43.9	1.4	41.5	—	86.8
December	134.6	2.9	81.3	0.2	218.9	40.8	1.2	42.5	0.1	84.7
<b>1999</b>										
March	110.8	9.7	90.7	0.2	211.4	35.4	0.8	42.6	—	78.9
June	124.6	6.1	91.3	0.3	222.3	39.6	1.7	43.1	0.1	84.5
September	136.0	6.3	109.4	0.2	252.0	46.2	1.3	49.1	0.1	96.8
December	132.5	5.1	87.8	0.2	225.6	45.8	1.5	46.5	0.1	93.9
<b>2000</b>										
March	104.3	10.0	100.7	0.4	215.3	37.8	1.3	47.8	0.1	87.0
June	137.3	7.3	98.2	0.2	243.1	39.8	1.3	47.3	0.1	88.3
September	130.7	5.0	103.8	0.3	239.9	42.4	1.7	46.6	0.1	90.9

(a) Includes plywood, veneer and sliced timber production converted to an equivalent cubic measurement.

(b) Includes blackwood, myrtle, sassafras etc.

(c) Radiata pine.

(d) Includes Huon pine, celery top pine and King William pine.

Source: Unpublished data.

	Producing locations(b)	Materials used(c)		Chipped and ground wood production  '000 tonnes green weight
		Logs delivered(d)	Sawmill offcuts	
		no.	'000 m <sup>3</sup>	
<b>1997-98</b>	28	3 998.1	457.9	4 440.1
<b>1998-99</b>	29	3 459.6	373.4	3 929.9
<b>1999-2000</b>	30	4 526.8	452.5	5 145.3
<b>1998</b>				
September	29	872.5	87.3	981.5
December	29	798.3	112.0	889.5
<b>1999</b>				
March	29	862.9	79.2	997.7
June	29	925.9	94.9	1 061.1
September	30	1 056.8	134.1	1 225.3
December	30	1 103.8	96.4	1 207.3
<b>2000</b>				
March	30	1 152.1	104.6	1 308.7
June	30	1 214.1	117.4	1 404.0
September	31	1 259.5	104.0	1 451.7

(a) Both hardwoods and softwoods, separate details are not available.

(b) Capable of producing at end of year or actually producing during quarter.

(c) Data reported by weight, converted to cubic measure by the factor of 0.95 m<sup>3</sup> per tonne.

(d) Includes log equivalent of limbwood and billets.

Source: Unpublished data.

	Sawmilling and plywood milling			Chipping and grinding(a)			Total		
	Crown land(b)	Private land	Total	Crown land(b)	Private land	Total	Crown land(b)	Private land	Total
	'000 m <sup>3</sup>	'000 m <sup>3</sup>	'000 m <sup>3</sup>	'000 m <sup>3</sup>	'000 m <sup>3</sup>	'000 m <sup>3</sup>	'000 m <sup>3</sup>	'000 m <sup>3</sup>	'000 m <sup>3</sup>
<b>1997-98</b>	750.7	129.6	880.3	1 894.9	2 103.1	3 998.1	2 645.7	2 232.7	4 878.3
<b>1998-99</b>	754.2	121.2	875.4	1 562.6	1 897.0	3 459.6	2 316.7	2 018.2	4 334.9
<b>1999-2000</b>	834.4	101.6	935.9	2 440.5	2 086.3	4 526.8	3 274.9	2 187.8	5 462.7
<b>1998</b>									
September	188.3	34.3	222.7	341.0	531.5	872.5	529.4	565.8	1 095.2
December	185.5	33.4	218.9	422.4	375.9	798.3	607.9	409.3	1 017.2
<b>1999</b>									
March	184.1	27.3	211.4	367.0	495.8	862.9	551.1	523.2	1 074.3
June	196.2	26.1	222.3	432.1	493.8	925.9	628.3	519.9	1 148.2
September	221.8	30.2	252.0	554.0	502.7	1 056.8	775.8	532.9	1 308.7
December	202.5	23.1	225.6	643.1	460.7	1 103.8	845.6	483.8	1 329.4
<b>2000</b>									
March	192.1	23.2	215.3	585.3	566.9	1 152.1	777.3	590.1	1 367.4
June	218.0	25.1	243.1	658.1	555.9	1 214.1	876.1	581.0	1 457.1
September	219.7	20.2	239.9	729.7	529.8	1 259.5	949.4	550.1	1 499.4

(a) Logs used are generally below sawmilling standard: includes log equivalent of limbwood and billets.

(b) Comprises all areas (including concession areas) from which royalties are payable to Forestry Tasmania.

Source: Unpublished data.

							Value(e)		
	Dwelling units						Non-residential buildings(d)		
	New houses	New other residential buildings(a)	Other dwelling units created (conversions etc.)(b)	Total dwelling units	New dwelling units	Alterations and additions to residential buildings(c)	Private	Total	Total of all building
	no.	no.	no.	no.	\$m	\$m	\$m	\$m	\$m
<b>1997-98</b>	1 419	219	5	1 643	142.4	38.4	82.8	125.5	306.3
<b>1998-99</b>	1 297	104	9	1 410	131.2	36.8	115.8	174.6	342.6
<b>1999-2000</b>	1 608	230	55	1 893	193.4	50.7	120.7	160.6	404.7
<b>1999</b>									
September	115	4	—	119	11.9	3.3	23.1	23.3	38.5
October	142	19	—	161	15.6	4.2	8.8	9.8	29.7
November	155	26	2	183	15.7	4.0	4.3	6.2	25.8
December	160	20	—	180	18.4	2.6	8.2	13.1	34.1
<b>2000</b>									
January	139	28	13	180	21.2	4.3	5.8	6.4	31.9
February	135	33	0	168	16.4	4.3	20.7	21.4	42.2
March	149	14	3	166	17.5	4.1	7.0	9.8	31.4
April	122	12	2	136	13.8	3.9	2.3	8.0	25.7
May	159	45	29	233	25.7	8.0	10.7	17.1	50.8
June	84	4	3	91	10.3	4.3	6.4	16.7	31.2
July	83	—	1	84	7.9	2.6	4.3	7.3	17.7
August	82	—	1	83	8.9	4.1	4.7	10.7	23.7
September	86	19	—	105	11.1	1.9	21.5	23.2	36.2

(a) New individual dwelling units (e.g. flats, home units and villa units).

(b) From alterations and additions to residential building, conversions of non-residential building to residential building etc.

(c) Valued at \$10,000 and over. Includes conversions and dwelling units approved as part of alterations and additions or as part of the construction of non-residential building.

(d) Comprises non-residential building (new plus alterations and additions) valued at \$50,000 and over.

(e) Value data from July 2000 reference month onward are recorded inclusive of GST. See Cat. no. 8731.0 or page 2 of this publication for more details.

Source: *Building Approvals, Australia* (Cat. no. 8731.0).

## 28

### SECURED HOUSING COMMITMENTS—ORIGINAL, SEASONALLY ADJUSTED AND TREND

	Total number of dwellings(a)			Total value of commitments(b)		
	Original	Seasonally adjusted	Trend	Original	Seasonally adjusted	Trend
	no.	no.	no.	\$m	\$m	\$m
<b>1999</b>						
September	888	857	870	69	64	68
October	869	929	872	67	70	68
November	923	930	856	76	74	68
December	774	772	829	67	67	68
<b>2000</b>						
January	634	751	802	53	62	67
February	850	859	793	71	72	66
March	880	753	815	73	63	68
April	751	782	865	61	66	70
May	1 135	1 018	925	87	77	73
June	946	943	976	71	77	75
July	1 070	1 127	1 014	78	80	76
August	1 112	1 024	1 038	83	78	76
September	930	973	1 057	70	68	76

(a) Includes new dwellings, established dwellings and refinancing. Excludes alterations and additions.

(b) Commitment is a firm offer of housing finance. It either has been, or is normally expected to be, accepted. Includes commitments to provide housing finance to employees and commitments accepted and cancelled in the same month. Excludes alterations and additions. Includes refinancing.

Source: *Housing Finance for Owner Occupation, Australia* (Cat. no. 5609.0).

## 29

### PRIVATE NEW CAPITAL EXPENDITURE BY TYPE OF ASSET(a)(b)

	Buildings and structures	Equipment, plant and machinery	Total
	\$m	\$m	\$m
<b>1998–99</b>	130	345	475
<b>1999–2000</b>	71	388	459
<b>1998</b>			
June	42	102	145
September	40	101	141
December	25	70	95
<b>1999</b>			
March	30	85	115
June	35	89	124
September	14	83	97
December	15	98	114
<b>2000</b>			
March	14	74	88
June	28	132	160

(a) Estimates based on a sample survey and therefore subject to sampling variability. Covers selected industries only—mining, manufacturing, finance, property and other selected industries.

(b) Current prices.

Source: *State Estimates of Private New Capital Expenditure*, (Cat. no. 5646.0.).

	Deposits				
	Current bearing interest	Current not bearing interest	Fixed	Investment savings accounts	Statement savings accounts
	\$m	\$m	\$m	\$m	\$m
<b>1999</b>					
September	796	243	2 006	610	280
October	819	249	2 015	608	279
November	850	252	1 951	604	281
December	870	269	1 602	599	283
<b>2000</b>					
January	861	260	1 098	599	283
February	862	260	1 039	595	282
March	878	276	1 106	593	283
April	863	282	1 113	587	284
May	1 088	268	1 108	429	249
June	1 241	274	1 108	299	226
July	1 250	264	1 202	275	228
August	1 280	259	1 222	280	243
September	1 271	270	1 198	281	244

	Deposits			Loans(b)
	Passbook/school savings accounts	Other	Total	
	\$m	\$m	\$m	
<b>1999</b>				
September	78	91	4 103	4 987
October	88	84	4 143	4 972
November	87	84	4 109	4 984
December	83	84	3 792	4 962
<b>2000</b>				
January	83	82	3 266	4 950
February	82	82	3 202	5 039
March	81	82	3 301	5 056
April	80	83	3 292	5 021
May	54	84	3 281	5 116
June	37	84	3 269	5 128
July	39	83	3 341	5 229
August	39	86	3 408	5 143
September	40	89	3 392	5 099

(a) Details are the averages of weekly figures for each month. The figures are derived from returns submitted by banks authorised under the Banking Act together with similar returns voluntarily submitted by the State banks; they exclude the Reserve Bank.

(b) Excludes non-resident loans.

Source: Reserve Bank of Australia.

	<i>Establish- ments</i>	<i>Guest rooms</i>	<i>Bed spaces</i>	<i>Persons employed</i>	<i>Room nights occupied</i>	<i>Room occupancy rate</i>	<i>Guest nights</i>	<i>Bed occupancy rate</i>	<i>Guest arrivals</i>	<i>Takings from accommodation</i>
	<i>no.</i>	<i>no.</i>	<i>no.</i>	<i>no.</i>	<i>'000</i>	<i>no.</i>	<i>'000</i>	<i>%</i>	<i>'000</i>	<i>\$'000</i>
LICENSED HOTELS WITH FACILITIES										
<b>1999</b>										
June qtr	54	2 900	7 950	2 723	127.1	48.1	207.1	28.6	115.1	10 658
<b>2000</b>										
April	n.a.	n.a.	n.a.	n.a.	47.2	54.8	79.7	33.8	46.7	3 988
May	n.a.	n.a.	n.a.	n.a.	46.9	52.7	71.7	29.4	38.6	4 131
June	n.a.	n.a.	n.a.	n.a.	34.5	40.0	54.3	23.0	29.4	2 978
June qtr	55	2 871	7 870	2 813	128.5	49.2	205.7	28.7	114.7	11 098
MOTELS AND GUEST HOUSES WITH FACILITIES										
<b>1999</b>										
June qtr	51	1 746	5 444	608	72.1	45.4	134.9	27.2	78.2	5 516
<b>2000</b>										
April	n.a.	n.a.	n.a.	n.a.	30.8	58.7	60.3	37.1	34.4	2 522
May	n.a.	n.a.	n.a.	n.a.	25.3	46.7	44.2	26.3	24.7	1 967
June	n.a.	n.a.	n.a.	n.a.	18.3	35.0	33.2	20.4	18.0	1 391
June qtr	51	1 749	5 420	671	74.5	46.8	137.8	27.9	77.1	5 880
SERVICED APARTMENTS										
<b>1999</b>										
June qtr	24	864	3 386	378	39.5	50.2	82.8	26.9	40.9	3 952
<b>2000</b>										
April	n.a.	n.a.	n.a.	n.a.	18.3	69.5	42.1	42.3	17.1	1 944
May	n.a.	n.a.	n.a.	n.a.	14.9	55.0	29.3	28.5	12.2	1 488
June	n.a.	n.a.	n.a.	n.a.	12.3	46.8	26.8	26.9	11.0	1 293
June qtr	25	876	3 317	437	45.5	57.1	98.1	32.5	40.2	4 724
TOTAL ESTABLISHMENTS										
<b>1999</b>										
June qtr	129	5 510	16 780	3 711	238.6	47.6	424.9	27.8	234.2	20 125
<b>2000</b>										
April	n.a.	n.a.	n.a.	n.a.	96.2	58.4	182.1	36.6	98.1	8 454
May	n.a.	n.a.	n.a.	n.a.	87.1	51.1	145.2	28.2	75.4	7 586
June	n.a.	n.a.	n.a.	n.a.	65.1	39.5	114.4	23.0	58.4	5 662
June qtr	131	5 496	16 607	3 921	248.5	49.7	441.6	29.2	232.0	21 702

(a) Comprising establishments with 15 or more rooms or units. For explanation of terms and concepts refer to Tourist Accommodation, Australia (Cat. no. 8635.0).

(b) For the four quarters of 2000, the scope of the Survey of Tourist Accommodation (STA) has been expanded. Over this period the following accommodation sectors will be covered: hotels, motels, guest houses and serviced apartments with 15 or more rooms; holiday flats, units and houses operated by owners, managers or real estate agents who have sole letting rights to at least 15 flats, units or houses for short term letting; caravan parks with 40 or more powered sites, cabins, etc; and visitor hostels with 25 or more bed spaces.

Source: Tourist Accommodation, Australia (Cat. no. 8635.0). For more detailed information, see Tourist Accommodation, Small Area Data, Tasmania (Cat. no. 8635.6.40.001).



# 32

## NATIONAL PARKS, PERSON ENTRIES(a)

<i>Tasmanian National Park attendance</i>							
	<i>Cradle Mountain(b) (Lake Dove)</i>	<i>Lake St Clair(b) (Cynthia Bay)</i>	<i>Freycinet(b)</i>	<i>Mt Field(b)</i>	<i>Narawntapu(c) (Bakers Beach)</i>	<i>Mole Creek Karst(d) (Marakoopa Cave)</i>	<i>Maria Island(e) (Darlington)</i>
	<i>no.</i>	<i>no.</i>	<i>no.</i>	<i>no.</i>	<i>no.</i>	<i>no.</i>	<i>no.</i>
<b>1999–2000</b>	200 700	111 600	308 500	130 700	33 200	29 460	13 213
<b>1999</b>							
October	15 300	8 700	18 200	9 200	2 800	2 080	1 070
November	16 600	10 600	25 600	9 800	2 600	2 837	1 060
December	22 500	10 300	32 600	14 620	4 700	4 049	1 305
<b>2000</b>							
January	33 100	19 400	48 200	22 100	6 400	4 320	2 315
February	22 300	14 400	33 400	16 400	3 700	2 591	1 617
March	21 800	15 000	31 700	13 500	3 300	2 750	1 642
April	23 000	13 100	44 000	14 000	2 600	3 225	1 615
May	8 300	5 500	21 700	5 600	1 100	1 350	603
June	8 600	3 300	17 400	6 000	1 400	1 576	526
July	6 600	2 800	10 000	5 200	1 000	1 023	62
August	7 600	2 600	10 600	6 300	1 200	1 140	313
September	10 600	6 200	16 500	9 800	2 100	2 354	929
October	11 400	6 900	15 100	9 200	2 500	1 758	748

(a) A 'person entry' occurs whenever a visitor enters a National Park. Measurement occurs at the designated sites in brackets.

(b) Estimated through a combination of traffic and booth counts.

(c) Estimated through traffic counts.

(d) Number of people taken on a guided tour.

(e) The sum of ferry arrivals and estimated plane passengers.

Source: Tasmanian Parks and Wildlife Service, Department of Primary Industries, Water and Environment.

# 33

## TRACKS IN NATIONAL PARKS, WALKER REGISTRATIONS(a)

	<i>Overland(b)</i>	<i>South Coast(c)</i>	<i>Freycinet(d)</i>	<i>Port Davey(c)</i>	<i>Frenchmans Cap</i>
	<i>no.</i>	<i>no.</i>	<i>no.</i>	<i>no.</i>	<i>no.</i>
<b>1999–2000</b>	7 339	1 011	2 784	272	807
<b>1999</b>					
October	215	16	196	1	22
November	727	56	251	10	37
December	1 440	227	386	99	113
<b>2000</b>					
January	1 518	328	587	75	218
February	1 209	173	335	34	161
March	1 309	133	317	26	110
April	704	60	282	25	58
May	111	2	39	—	15
June	104	1	65	—	20
July	p 33	3	89	2	15
August	p 55	—	35	—	5
September	p 117	12	163	4	27
October	p 146	n.y.a.	113	n.y.a.	n.y.a.

(a) Numbers include only walkers who registered and represented their intention.

(b) Sum of registrations at Cradle Mt and Lake St Clair.

(c) Sum of registrations to walk the length of the track in any direction, irrespective of starting point.

(d) All overnight walkers registered in the park.

Source: Tasmanian Parks and Wildlife Service, Department of Primary Industries, Water and Environment.

	Passenger vehicles	Other vehicles(b)	Total(excl. motor cycles)	Vehicles registered by vehicle rental businesses(c)	Motor cycles
	no.	no.	no.	no.	no.
<b>1997-98</b>	13 232	2 740	15 972	2 544	542
<b>1998-99</b>	12 359	2 786	15 145	1 771	568
<b>1999-2000</b>	11 373	3 183	14 556	2 093	563
<b>1999</b>					
September	1 240	218	1 458	470	42
October	885	245	1 130	138	65
November	964	292	1 256	151	49
December	1 626	273	1 899	835	58
<b>2000</b>					
January	748	204	952	59	29
February	782	210	992	1	52
March	888	240	1 128	10	44
April	704	233	937	19	41
May	786	340	1 126	3	74
June	665	394	1 059	1	27
July	1 001	204	1 205	81	47
August	1 228	244	1 472	209	70
September	1 313	232	1 545	454	49

(a) Includes State and Commonwealth Government owned motor vehicles and other than those belonging to the defence services. Excludes tractors, plant and equipment, caravans and trailers.

(b) Comprises utilities, panel vans, rigid and articulated trucks and other truck type vehicles (i.e. motor vehicles designed for purposes other than freight carrying, e.g. campervans, tow trucks, ambulances and hearses) and buses.

(c) These figures are included in previous columns.

Source: New Motor Vehicle Registrations, Australia (Cat. no. 9303.0.40.003) and unpublished data.

							Seasonally adjusted(c)	
	Original	Food retailing	Clothing and soft good retailing	Household good retailing	Recreational good retailing	Hospitality and services	Total(d)  Change from corresponding month of previous year	
	\$m	\$m	\$m	\$m	\$m	\$m	\$m	%
1997-98	3 149.4	1 350.9	186.0	321.6	215.2	434.2	3 150.8	..
1998-99	3 170.1	1 350.8	186.2	341.2	200.4	433.2	3 174.8	..
1999-2000 r	3 278.4	1 398.4	163.8	371.8	211.7	477.6	3 264.9	..
1999								
September r	263.7	116.6	14.8	31.2	17.9	38.0	274.1	5.7
October r	272.1	118.4	13.8	29.4	18.1	38.1	271.9	4.4
November r	279.0	118.3	13.5	29.1	17.7	39.8	272.1	4.5
December r	368.9	119.7	13.4	28.4	17.5	39.7	274.1	7.1
2000								
January r	260.9	115.6	13.5	31.5	18.2	41.6	269.2	0.8
February r	257.4	118.9	13.5	29.3	17.3	41.6	270.4	0.4
March r	272.8	118.5	12.8	30.5	16.9	42.9	271.6	-2.2
April r	256.8	114.6	12.2	32.3	17.8	40.1	268.8	-0.1
May r	258.2	113.1	12.9	31.6	17.4	39.5	266.8	-0.7
June r	264.8	113.6	14.0	37.4	17.5	38.6	277.3	2.7
July r	247.7	116.0	12.4	31.4	16.3	39.1	264.2	-3.3
August r	261.6	116.9	13.7	33.6	16.7	36.1	271.2	-1.6
September	264.9	119.1	14.1	32.7	17.0	38.8	277.0	1.1

(a) Excludes motor vehicles, parts, petrol, etc.

(b) For April 2000, changed frame maintenance procedures have resulted in an increase in the level of retail turnover, but the increases have been phased in so that current and historical month to month movements have been limited.

(c) Includes Department stores and Other retailing.

(d) Data from July 2000 reference month onwards are recorded inclusive of GST. The trend series on current price terms has been suspended as at June 2000. See Cat no. 8501.0 and page 2 of this publication for more details.

Source: Retail Trade, Australia (Cat. no. 8501.0).

	Tasmania				Australia			
	Imports	Imports change over preceding period	Exports	Exports change over preceding period	Imports	Imports change over preceding period	Exports(b)	Exports change over preceding period
	\$m	%	\$m	%	\$m	%	\$m	%
<b>1997-98</b>	385	-3	2 136	25	90 684	15	87 768	11
<b>1998-99</b>	407	6	2 019	-6	97 611	8	85 991	-2
<b>1999-2000</b>	440	8	2 215	10	110 132	13	r 97 275	13
<b>1999</b>								
September	43	35	115	-23	8 965	1	7 393	1
October	32	-26	222	93	10 216	14	7 984	8
November	33	4	155	-30	9 701	-5	8 473	6
December	31	-6	165	7	8 922	-8	8 375	-1
<b>2000</b>								
January	35	12	231	40	8 110	-9	6 831	-18
February	35	-1	185	-20	8 653	7	8 233	21
March	36	3	198	7	9 648	12	r 8 812	7
April	33	-7	172	-13	8 004	-17	8 271	-6
May	58	73	287	67	10 414	30	9 214	11
June	33	-44	175	-39	10 447	0	r 9 186	0
July	47	44	165	-6	9 772	-7	r 9 365	2
August	56	19	r 180	r 10	10 749	10	r 9 352	0
September	34	-40	165	-9	9 885	-8	9 783	5

(a) It is difficult to get a complete picture of Tasmania's trade performance as imports recorded by the ABS include only goods imported directly into the State from overseas, and reported by the Australian Customs Service. Many of Tasmania's goods imported for direct consumption, or input into further processing industries, arrive via interstate ports, and are not included in this table.

(b) Includes re-exports.

	European Community			East Asia					Total all countries
	United States of America	United Kingdom	Total European Community	Japan	Korea	Taiwan	Hong Kong	ASEAN(a)	
	\$'000	\$'000	\$'000	\$'000	\$'000	\$'000	\$'000	\$'000	
1997-98	176 175	25 063	338 791	549 048	67 801	150 405	132 551	399 472	2 136 171
1998-99	235 787	28 691	278 037	466 626	101 177	150 071	152 533	353 441	2 019 182
1999-2000	r 202 832	19 228	r 309 082	489 037	133 562	207 243	201 349	r 383 693	2 215 280
1999									
September	11 467	916	6 846	28 486	7 093	14 051	9 514	19 719	115 078
October	15 629	3 384	82 623	45 827	8 844	12 201	9 066	24 584	222 321
November	8 367	1 141	6 210	40 317	12 089	15 738	13 761	32 597	155 142
December	14 110	364	6 495	40 126	13 507	14 772	17 715	28 969	165 338
2000									
January	15 158	1 214	76 008	37 408	9 180	16 485	17 086	29 980	230 891
February	21 256	923	11 232	48 466	13 507	18 177	20 529	32 952	185 180
March	14 953	1 559	12 228	37 558	14 667	17 750	22 177	48 051	198 453
April	20 607	2 088	9 102	41 176	10 164	19 499	18 893	32 636	171 808
May	22 716	1 916	71 610	53 804	17 804	29 469	18 987	41 285	r 287 123
June	r 19 427	2 096	r 7 506	48 785	9 834	18 454	17 196	r 36 134	r 175 233
July	r 15 642	4 656	9 294	37 275	9 219	r 12 837	21 192	r 27 637	r 164 492
August	20 880	r 1 692	r 5 807	r 48 222	r 17 828	r 15 268	20 045	r 36 143	r 180 490
September	12 761	4 164	10 142	30 303	11 831	21 415	25 510	37 588	164 764

(a) ASEAN member countries are: Brunei, Indonesia, Laos, Malaysia, Myanmar, Philippines, Singapore, Thailand and Viet Nam.

	<i>Meat and meat preparations</i>	<i>Dairy products</i>	<i>Fish, crustaceans and molluscs</i>	<i>Vegetables and fruit</i>	<i>Wood and woodchips</i>	<i>Textile fibres and wastes</i>	<i>Metallic ores and metal scrap</i>
	\$'000	\$'000	\$'000	\$'000	\$'000	\$'000	\$'000
<b>1997-98</b>	71 918	133 675	141 205	55 242	311 359	29 641	254 054
<b>1998-99</b>	65 026	102 709	136 268	54 907	296 164	24 999	278 001
<b>1999-2000</b>	r 88 298	64 571	145 484	44 686	303 432	22 358	243 216
<b>1999</b>							
September	5 008	2 503	14 468	1 397	19 172	2 051	12 218
October	5 330	4 256	9 240	446	27 681	1 111	23 997
November	5 977	4 494	12 775	442	24 706	1 604	29 618
December	7 307	3 723	16 011	422	23 389	3 913	28 970
<b>2000</b>							
January	6 296	7 366	11 677	754	32 062	1 460	21 084
February	8 376	5 680	11 507	3 066	31 878	1 812	14 065
March	9 595	7 726	12 692	8 108	26 189	4 519	19 320
April	8 834	6 552	9 401	10 282	35 667	1 772	11 085
May	11 354	r 9 220	13 722	9 063	32 315	592	26 793
June	r 7 970	6 580	6 236	4 420	1 344	1 094	21 483
July	r 6 308	7 559	15 964	r 4 215	3 836	1 363	20 609
August	r 5 775	r 5 264	r 16 055	r 3 317	3 521	534	r 12 547
September	3 945	6 990	16 318	1 391	2 665	2 927	10 229

	<i>Medical and pharmaceutical products</i>	<i>Paper and paperboard</i>	<i>Iron and steel</i>	<i>Non-ferrous metals</i>	<i>Road vehicles and transport equipment</i>	<i>Other and combined confidential items</i>	<i>Total all commodity groups</i>
	\$'000	\$'000	\$'000	\$'000	\$'000	\$'000	\$'000
<b>1997-98</b>	34 755	21 222	76 463	557 126	280 251	169 261	2 136 171
<b>1998-99</b>	52 330	4 130	95 265	544 311	173 015	192 057	2 019 182
<b>1999-2000</b>	67 353	9 932	10 216	r 681 903	213 836	319 993	r 2 215 280
<b>1999</b>							
September	4 096	62	61	37 870	1 008	15 165	115 078
October	4 963	223	201	44 314	70 784	29 776	222 321
November	5 153	972	60	52 096	277	16 968	155 142
December	2 146	1 316	2 156	51 889	50	24 046	165 338
<b>2000</b>							
January	3 367	535	169	55 551	72 222	18 347	230 891
February	6 425	1 704	178	68 007	636	31 846	185 180
March	8 343	1 518	322	74 371	1 333	24 418	198 453
April	8 133	773	100	55 293	1 520	22 397	171 808
May	6 711	1 664	694	63 632	64 934	46 429	r 287 123
June	5 613	596	782	r 64 109	521	54 485	r 175 233
July	7 800	377	458	47 434	251	r 48 318	r 164 492
August	10 757	r 594	234	61 186	r 136	r 60 570	r 180 490
September	7 097	343	286	61 985	397	50 190	164 764

	NSW	Vic.	Qld	SA	WA	Tas.	Aust.(a)
<b>Population</b>							
Estimated resident population, March 2000 ('000) p	6 448.8	4 753.9	3 549.3	1 496.1	1 877.5	470.3	19 104.6
Proportion of Australian population, March 2000 (%) p	33.8	24.9	18.6	7.8	9.8	2.5	100.0
Population growth rate, 12 months to March 2000 (%) p	1.1	1.2	1.6	0.3	1.4	-0.2	1.1
<b>Labour force</b>							
Employment growth, 12 months to October 2000 (trend series) (%)							
Males	2.2	4.1	2.1	2.3	0.4	0.5	2.4
Females	5.0	3.9	3.3	1.5	3.0	1.7	3.9
Persons	3.4	4.0	2.6	2.0	1.5	1.1	3.1
Unemployment rate (trend series), October 2000 (%)	5.4	6.2	7.5	7.2	6.0	9.5	6.3
Unemployment growth, 12 months to October 2000 (trend series) (%)	-10.6	-9.5	-6.0	-11.2	-8.9	4.0	-8.9
Participation rate (trend series), October 2000 (%)	62.5	64.0	65.0	60.9	66.4	59.4	63.8
Job vacancy rate, August 2000 (%)	1.8	2.3	0.9	1.0	1.5	1.5	1.7
Working days lost through industrial disputes, 12 months to August 2000 (days per '000 employees)	132	84	61	28	77	6	87
<b>Wages and prices</b>							
Average weekly total earnings, full-time adult employees (trend series) August 2000 (\$)							
Males	956.4	866.5	846.3	848.1	925.7	831.8	899.1
Females	749.8	738.1	681.0	693.4	697.0	667.1	728.0
Persons	877.4	819.8	786.4	790.9	845.7	775.9	836.4
Average weekly total earnings, full-time adult employees, growth (trend), 12 months to Aug '00 (%)	4.8	4.9	6.4	6.2	5.4	5.7	5.3
Consumer price index, all groups, annual growth to September qtr 2000 (%) (b)	6.0	6.3	5.9	5.8	5.5	6.5	6.1
<b>Building</b>							
% change in the number of total dwelling units approved (original) in the 12 months ended September 2000, over the same period previous year	-17.4	6.4	7.1	11.9	-8.1	24.9	-3.3
September 1999 to September 2000	-42.2	-40.2	-35.9	-54.9	-42.1	-11.8	-41.4
For footnotes see end of table.							...continued

	NSW	Vic.	Qld	SA	WA	Tas.	Aust.(a)
<b>Private investment and retail trade</b>							
% change in private new capital expenditure, 12 months ended June 2000, over the same period previous year (original)	2.7	-3.0	-0.9	7.8	-24.2	-3.4	-4.9
% change in seasonally adjusted estimates turnover of retail establishments, September 2000 (change from corresponding month of the previous year)	9.0	-2.7	4.6	4.0	7.3	1.1	4.7
<b>Transport</b>							
% change in number of new motor vehicles (excluding motorcycles) registered in the 12 months ended September 2000, over the same period previous year	-0.8	-1.1	-0.2	-4.0	-6.4	-1.2	-1.5
<b>Agriculture</b>							
% change in the number of livestock slaughtered 12 months ended September 2000 over the same period previous year (original)							
Cattle and calves	-7.3	-8.8	2.6	9.6	-6.4	-6.9	-3.3
Sheep and lambs	1.1	14.2	6.0	1.9	1.7	10.4	6.1
<b>Tourism—room occupancy rates</b>							
Hotels, motels & guest houses, & serviced apartments with facilities, June quarter 2000 (%)	58.1	57.1	56.5	56.4	54.4	49.7	57.1
<b>Australian National and State Accounts</b>							
% change in Domestic (State) Final Demand(c), Chain Volume measures (trend series)							
Mar qtr 2000 to Jun qtr 2000	0.9	1.1	1.0	1.0	-0.1	1.5	1.0
Jun qtr 1999 to Jun qtr 2000	4.9	5.0	6.0	5.9	1.1	5.3	4.5
(a) Australian totals include the ACT and NT, with the exception of Agriculture, which excludes both.							
(b) CPI applies to State capitals.							
(c) Total of four types of expenditure: Private investment, Private consumption, Government investment, Government consumption.							

		<i>Greater Hobart and Southern Statistical Divisions</i>	<i>Northern Statistical Division</i>	<i>Mersey-Lyell Statistical Division</i>	<i>Tasmania</i>
<b>Area, at 30 June 1996</b>	<i>Unit</i>	25 521	19 935	22 507	67 964
<b>Population</b>					
Estimated resident population, 30 June 1996	no.	230 187	134 047	110 209	474 443
Estimated resident population, 30 June 1999	no.	228 855	133 016	108 390	470 261
Births 1998(a)	no.	2 828	1 621	1 515	5 974
Deaths 1998(a)	no.	1 798	975	823	3 596
<b>Labour force (original), October 2000</b>					
Total employed	no.	95 700	61 700	41 800	199 200
Total unemployed	no.	9 500	5 100	5 700	20 200
Unemployment rate	%	9.0	7.6	11.9	9.2
Participation rate	%	58.4	61.6	57.1	59.1
<b>Schools. 1999(b)</b>					
Government	no.	100	57	59	216
Non-government	no.	32	17	16	65
<b>School students, 1999(b)(c)</b>					
Government					
Males	no.	15 529.8	9 254.0	7 867.3	32 651.1
Females	no.	14 785.4	9 291.5	7 650.5	31 727.4
Total	no.	30 315.2	18 545.5	15 517.8	64 378.5
Non-government					
Males	no.	5 866.0	2 474	2 047	10 387.4
Females	no.	6 170.8	2 375.1	1 979.7	10 525.6
Total	no.	12 036.8	4 849.1	4 027.1	20 913.0
<b>Educational qualification, 1996 Census(d)</b>					
Bachelor degree or higher(e)	no.	17 058	7 152	3 908	28 184
Undergraduate diploma	no.	5 893	3 268	2 181	11 374
Associate diploma	no.	3 773	1 902	1 466	7 184
Skilled vocational	no.	16 255	10 040	8 841	35 238
Basic vocational	no.	4 548	2 632	2 305	9 515
<b>Agriculture</b>					
Establishments with agricultural activity, 1998–99 season	no.	1 129	1 583	1 734	4 446
Total area of establishments	ha.	744 493	855 423	327 938	1 927 854
Crops, production, 1998–99 season					
Potatoes	tonnes	7 019	135 661	184 802	327 482
Onions	tonnes	949	13 527	45 996	60 471
Apples	tonnes	46 296	4 847	11 128	62 271
Barley	tonnes	8 180	19 327	2 537	30 044
Livestock, 1998–99 season					
Beef cattle	no.	77 760	191 042	222 641	491 443
Dairy cattle	no.	7 307	84 985	140 630	232 922
Sheep and lambs	no.	1 664 194	1 958 201	178 740	3 801 135
Pigs	no.	2 796	13 289	5 821	21 906
Gross value of agricultural production, 1998–99	\$m	147	249	305	700
For footnotes see end of table.					...continued



	<i>Unit</i>	<i>Greater Hobart and Southern Statistical Divisions</i>	<i>Northern Statistical Division</i>	<i>Mersey-Lyell Statistical Division</i>	<i>Tasmania</i>
<b>Business locations, September 1998</b>					
Locations with manufacturing activity					
Less than 20 employees	no.	424	327	257	1 008
20 or more employees	no.	83	67	48	198
Total	no.	507	394	305	1 206
Locations with retail activity					
Less than 20 employees	no.	2 046	1 346	1 133	4 525
20 or more employees	no.	82	43	35	160
Total	no.	2 128	1 389	1 168	4 685
<b>Building, 1999–2000</b>					
Total dwelling units approved	no.	1 037	537	319	1 893
Value of total residential building approved	\$'000	138 309	66 632	39 163	244 104
Value of total building approved	\$'000	226 094	115 050	63 554	404 699
<b>Dwellings, Census 1996(d)</b>					
Total dwellings	no.	98 815	57 467	45 529	201 820
Occupied private dwellings	no.	85 255	49 759	40 183	175 197
Fully owned	no.	34 338	21 563	18 359	74 260

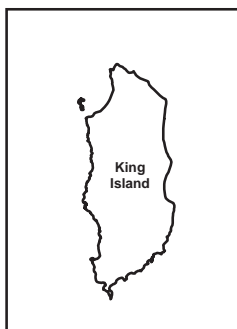
(a) Births and deaths are based on usual residence year of registration. Total Tasmania includes usual residences other than Tasmanian Statistical Divisions.

(b) Source: DETYA and Tasmanian Department of Education.

(c) Full-time equivalent.

(d) Total includes migratory statistical division.

(e) Includes higher degree, postgraduate diploma and bachelor degree.



# Statistical Divisions

Statistical Division NORTHERN  
 Local Government Area Dorset



Based on ASGC 1996  
 Prepared by: Demography Section, ABS Hobart  
 © Commonwealth of Australia, 1998



## FOR MORE INFORMATION...

- INTERNET** [www.abs.gov.au](http://www.abs.gov.au) the ABS web site is the best place to start for access to summary data from our latest publications, information about the ABS, advice about upcoming releases, our catalogue, and Australia Now—a statistical profile.
- LIBRARY** A range of ABS publications is available from public and tertiary libraries Australia-wide. Contact your nearest library to determine whether it has the ABS statistics you require, or visit our web site for a list of libraries.
- CPI INFOLINE** For current and historical Consumer Price Index data, call 1902 981 074 (call cost 77c per minute).
- DIAL-A-STATISTIC** For the latest figures for National Accounts, Balance of Payments, Labour Force, Average Weekly Earnings, Estimated Resident Population and the Consumer Price Index call 1900 986 400 (call cost 77c per minute).

## INFORMATION SERVICE

Data which have been published and can be provided within five minutes are free of charge. Our information consultants can also help you to access the full range of ABS information—ABS user-pays services can be tailored to your needs, time frame and budget. Publications may be purchased. Specialists are on hand to help you with analytical or methodological advice.

- PHONE** **1300 135 070**
- EMAIL** **[client.services@abs.gov.au](mailto:client.services@abs.gov.au)**
- FAX** 1300 135 211
- POST** Client Services, ABS, GPO Box 796, Sydney 1041

## WHY NOT SUBSCRIBE?

ABS subscription services provide regular, convenient and prompt deliveries of ABS publications and products as they are released. Email delivery of monthly and quarterly publications is available.

- PHONE** 1300 366 323
- EMAIL** [subscriptions@abs.gov.au](mailto:subscriptions@abs.gov.au)
- FAX** 03 9615 7848
- POST** Subscription Services, ABS, GPO Box 2796Y, Melbourne 3001



2130360012004  
ISSN 1034-1803

RRP \$19.50